

Motor Özellikleri
(Engine Specifications)

Piston Ölçüleri
(Piston Dimensions)

Piston Parça No
(Piston Part No)

Segman Seti
(Ring Set)

Silindir Gömleği
(Liner)

Silindir Kit
(Assembly Set)

Piston - Blok Montaj
Yüksekliği
(Piston - Block
Assembly Height)

İmalatçı (Manufacturer):
CATERPILLAR
Çap (Diameter): Ø 146,05
FM GrupNo: 1710

A : 131.700
B - : 21.750
B Ø : 125.000
C1 : 6.730
D : 208.000
E : 26.100

86-70336-STD

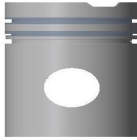
4.747
2.385
6.335

- 0,30 / - 0,50

D375

8 Sil. Dizel
27250cc
175/357Kw (238-486PS)
16:1

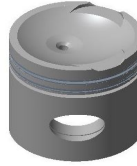
Pim: 60,71 x 120,3



Motor nr. 16B1..16B439,
Motor nr. 17B1..17B211,
Motor nr. 18B1..18B197
1954....

D397D

12 Sil. Dizel
Motor nr. 41B1..41B2498,
Motor nr. 42B1..42B458
1954....



D386

12 Sil. Dizel
40800cc 265/537Kw
(360-730PS) 16:1
Motor nr. 13B1..13B258,
Motor nr. 14B1..14B29,
Motor nr. 15B1..15B71
1954....

Piston Özellikleri
(Piston Features)

Çift Segman Taşıyıcı
(Double Ring Carrier)
Gözarası Konik
(Conical Eye Gap)

D397

12 Sil. Dizel
Motor nr. 10B1..10B725,
Motor nr. 11B1..11B175,
Motor nr. 12B1..12B399
1954

