



LAND ROVER - Ø 90,475

86-71413-STD



**Motor Özellikleri**  
(Engine Specifications)

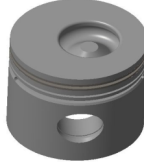
İmalatçı (Manufacturer):  
LAND ROVER  
Çap (Diameter): Ø 90,475  
FM Grup No: 4904

**200 TDi (11L)**  
4 Sil. Dizel 2495cc 19,5:1  
Turbo, Direkt Enjeksiyon  
(Direct Injection)  
DEFENDER 110,  
DEFENDER 130,  
DEFENDER 90,  
DISCOVERY Tdi,  
RANGE ROVER  
VOGUE Tdi  
1990 - 1994

**Piston Ölçüleri**  
(Piston Dimensions)

A : 55.400  
B- : 18.800  
BØ : 39.500  
BX : 7.000  
D : 92.000  
E : 8.250

Pim: 30,162 x 77



**Piston Özellikleri**  
(Piston Features)

Segman Taşıyıcı  
(Ring Carrier)  
Çelik Plaka  
(Steel Strut)  
Gözarası Düz  
(Flat Eye Gap)

**Piston Parça No**  
(Piston Part No)

86-71413-STD

**Segman Seti**  
(Ring Set)

2.568  
2.000  
3.000

**Silindir Gömleği**  
(Liner)

**Silindir Kit**  
(Assembly Set)

**Piston - Blok Montaj**  
Yüksekliği  
(Piston - Block  
Assembly Height)

1 Çentik Conta ile  
(With 1 Notch Gasket)  
0,50/0,60

2 Çentik Conta ile  
(With 2 Notch Gasket)  
0,60/0,70

3 Çentik Conta ile  
(With 3 Notch Gasket)  
0,71/0,80

4 Çentik Conta ile  
(With 4 Notch Gasket)  
0,81/0,90

