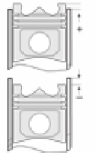
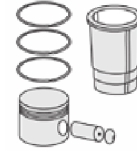
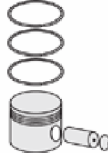
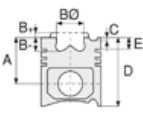




BMW - Ø 92

87-70206-STD



Motor Özellikleri
(Engine Specifications)

Piston Ölçüleri
(Piston Dimensions)

Piston Parça No
(Piston Part No)

Segman Seti
(Ring Set)

Silindir Gömleği
(Liner)

Silindir Kit
(Assembly Set)

Piston - Blok Montaj
Yüksekliği
(Piston - Block
Assembly Height)

İmalatçı (Manufacturer):
BMW
Çap (Diameter): Ø 92
FM Grup No : 1449

A : 31.300
C1 : 2.950
D : 53.300
E : 7.300

87-816200-02
87-70206-STD

87-816207-02
87-70206 0,50

06-816200-50-STD
06-816207-50 0,50

1.500 NT ST
1.500 P F14
2.000 CR ST

M 62 B44LEV
8 Sil. Benzinli (Gasoline)
4395cc 210KW/286 PS
540i, 740i, 840i, X5
1996

Pim: 22 x 60



Piston Özellikleri
(Piston Features)

Sert Anotlama
(Hard Anodizing)
Gözarası düz
(Flat Eye Gap)

