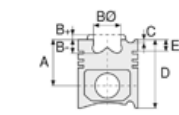


**Motor Özellikleri**  
(Engine Specifications)

İmalatçı (Manufacturer):  
CATERPILLAR  
Çap (Diameter): Ø 105  
FM GrupNo: 1701

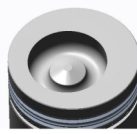
6 Sil. Dizel  
Excavators, Wheel Loader  
325, 325L, 325LN, 938F  
1993....



**Piston Ölçüleri**  
(Piston Dimensions)

A : 59.120  
B - : 18.220  
BØ: 63.100  
BX : 5.000  
BY : 3.200  
D : 93.420  
E : 12.000

Pim: 40 x 85



**Piston Özellikleri**  
(Piston Features)

Çift Segman Taşıyıcı  
(Double Ring Carrier)  
Gözarası Konik  
(Conical Eye Gap)



**Piston Parça No**  
(Piston Part No)

87-824400-02  
87-70320-STD



**Segman Seti**  
(Ring Set)

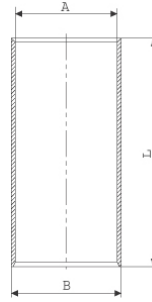
06-824400-00-STD

3.100 CRP KV1  
3.100 CRP KV1  
4.000 CRP STD

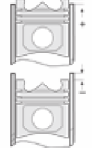


**Silindir Gömleği**  
(Liner)

14-010020-00-D  
B : 109.830  
L : 197.000



**Silindir Kit**  
(Assembly Set)



**Piston - Blok Montaj**  
Yüksekliği  
(Piston - Block  
Assembly Height)

+0,30 /+ 0,50  
+0,70 /+ 0,80

