



Motor Özellikleri
(Engine Specifications)

İmalatçı (Manufacturer):
CATERPILLAR
Çap (Diameter): Ø 105
FM GrupNo: 1702

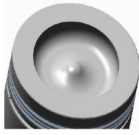
6 Sil. Dizel
Excavators, Wheel Loader
325, 325L, 325LN, 938F



Piston Ölçüleri
(Piston Dimensions)

A : 59.120
B- : 14.030
BØ : 70.500
D : 93.420
E : 12.000

Pim: 40 x 85



Piston Özellikleri
(Piston Features)

Çift Segman Taşıyıcı
(Double Ring Carrier)
Gözarası Konik
(Conical Eye Gap)



Piston Parça No
(Piston Part No)

87-824400-22
87-70321-STD



Segman Seti
(Ring Set)

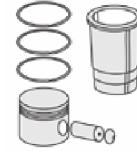
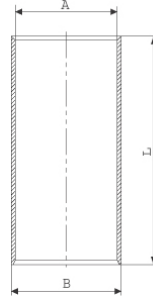
06-824400-00-STD

3.100 CRP KV1
3.100 CRP KV1
4.000 CRP STD

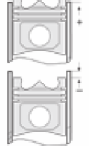


Silindir Gömleği
(Liner)

14-010020-00-D
B : 109.830
L : 197.000



Silindir Kit
(Assembly Set)



Piston - Blok Montaj
Yüksekliği
(Piston - Block
Assembly Height)

+0,70 / + 0,80

