



Motor Özellikleri
(Engine Specifications)

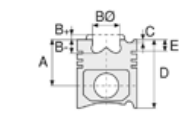
İmalatçı (Manufacturer):
MERCEDES BENZ PKW
Çap (Diameter): Ø 89
FM Grp No: 5825

**OM 601.900/940-
943/970**

4 Sil. Dizel 2299cc
58/60 Kw (79/82 PS)
22:1108D VITO,
110D VITO, 207D,
208D SPRINTER,
307D, 308D
SPRINTER, 407D,
408D SPRINTER,
507D, 508D
1988...

OM 602

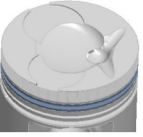
5 Sil. Dizel 2874cc 70
Kw (95 PS) 22:1 210D,
310D, 312D, 410D,
412D, SPRINTER 212D
1992...



Piston Ölçüleri
(Piston Dimensions)

A : 44.650
B - : 9.030
C1 : 1.050
C2 : 1.250
D : 74.650
E : 13.000

Pim : 26 x 62



Piston Özellikleri
(Piston Features)

Segman Taşıyıcı
(Ring Carrier)
Çelik Plaka
(Steel Strut)
Yağ Püskürtme Oyuğu
(Oil Jet Cut-Out)
Gözarası Düz
(Flat Eye Gap)



Piston Parça No
(Piston Part No)

87-743100-02
87-70456-STD

87-743107-02
87-70456-050

87-743111-02
87-70456-100



Segman Seti
(Ring Set)

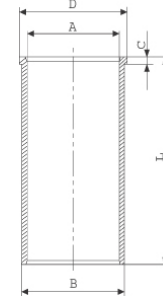
06-743100-00-STD
06-743107-00-0,50 mm
06-743111-00-1,00 mm

2.500 CRP KV1
2.000 P STD
3.000 CRP GOE



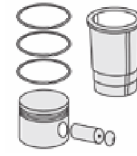
Silindir Gömleği
(Liner)

14-027210-00-D
B : 91.500
L : 156.500
D : 94.050
C : 4.700

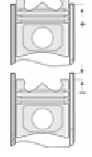


14-027211-00-D
B : 92.000
L : 156.500
D : 94.050
C : 4.700

Dış Çap 0,50mm Farklı
(Outside Diameter
0.50mm Different)



Silindir Kit
(Assembly Set)



Piston - Blok Montaj
Yüksekliği
(Piston - Block
Assembly Height)

1,80 mm Conta İle
(With Gasket)
+0,84 / +1,06

2,00 mm Conta İle
(With Gasket)
+0,60 / +1,06

