



Motor Özellikleri
(Engine Specifications)

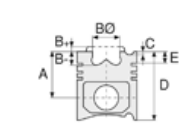
İmalatçı (Manufacturer):
MERCEDES BENZ PKW
Çap (Diameter): Ø 89
FM Grup No: 5831

OM 602DE

29LA.980/982/
983/984/985
5 Sil. Dizel 2874cc 90/95
Kw (122/129 PS) 19,5:1
Turbo 290GD, E290TD,
Korando 2.9TD,
Musso 2.9TD,
Rexton 2.9TD,
SPRINTER 212D,
SPRINTER 312D,
SPRINTER 412D
1994 - 2000

OM 602DE

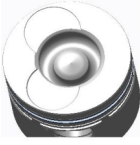
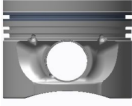
29LA.980/982/
983/984/985
5 Sil. Dizel 2874cc 90/95
Kw (122/129 PS) 19,5:1
Turbo 290GD, E290TD,
Korando 2.9TD,
Musso 2.9TD,
Rexton 2.9TD,
SPRINTER 212D,
SPRINTER 312D,
SPRINTER 412D
1994 - 2000



Piston Ölçüleri
(Piston Dimensions)

A : 44.750
B - : 16.730
BØ : 42.000
BX : 2.000
BY : 0.700
C1 : 0.300
C2 : 0.600
D : 71.250
E : 12.000

Pim : 28 x 70



Piston Özellikleri
(Piston Features)

Segman Taşıyıcı
(Ring Carrier)
Soğutma Kanallı
(Cooling Gallery)
Yağ Püskürtme Oyuğu
(Oil Jet Cut-Out)
Gözarası Düz
(Flat Eye Gap)



Piston Parça No
(Piston Part No)

87-743100-22
87-70458-STD
87-743107-22
87-70458-050
87-743111-22
87-70458-100
87-743100-23
87-70458-STD1
0,20 mm Kısa (Short)



Segman Seti
(Ring Set)

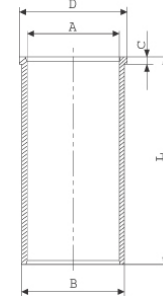
06-743100-00-STD
06-743107-00-0,50 mm
06-743111-00-1,00 mm

2.500 CRP KV1
2.000 P STD
3.000 CRP GOE



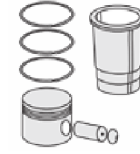
Silindir Gömleği
(Liner)

14-027210-00-D
B : 91.500
L : 156.500
D : 94.050
C : 4.700

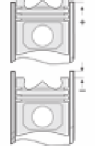


14-027211-00-D
B : 92.000
L : 156.500
D : 94.050
C : 4.700

Dış Çap 0,50mm Farklı
(Outside Diameter
0.50mm Different)



Silindir Kit
(Assembly Set)



Piston - Blok Montaj
Yüksekliği
(Piston - Block
Assembly Height)

+ 0,83 / + 1,06

