

Motor Özellikleri
(Engine Specifications)

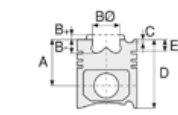
İmalatçı (Manufacturer):
MERCEDES BENZ PKW
Çap (Diameter): Ø 89
FM Grup No: 5828

**M102 V20.920/921/
924/964**

4 Sil. Benzinli 1997cc 66/80
Kw (90-109 PS) 9:1
190, 200
1983 - 1985

**M102 E20.961/962/
963/964**

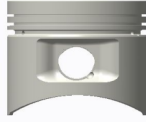
4 Sil. Benzinli 1997cc 80/90
Kw (109/122 PS) 9, 1:1
190E, 200E, 200GE
1984 - 1993



Piston Ölçüleri
(Piston Dimensions)

A : 43.200
C1 : 2.240
C2 : 1.720
D : 79.700
E : 9.400

Pim : 22 x 56



Piston Özellikleri
(Piston Features)

Çelik Plaka
(Steel Strut)
Gözarası Düz
(Flat Eye Gap)



Piston Parça No
(Piston Part No)

87-179500-02
87-70470-STDA
87-179507-02
87-70470-050A
87-179511-02
87-70470-100A



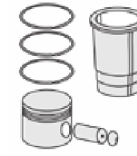
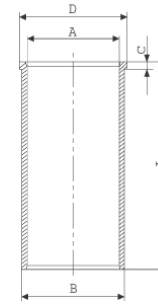
Segman Seti
(Ring Set)

06-179500-00-STD
06-179505-00-0,25 mm
06-179507-00-0,50 mm
06-179511-00-1,00 mm
1.750 CRP KV1
2.000 P STD
3.500 CRP STD

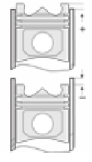


Silindir Gömleği
(Liner)

14-025480-00-D
B : 92.020
L : 165.000
D : 95.050
C : 4.100



Silindir Kit
(Assembly Set)



Piston - Blok Montaj
Yüksekliği
(Piston - Block
Assembly Height)

87-181400-52
87-70470-STDB
87-181407-52
87-70470-050B
87-181411-52
87-70470-100B

06-181400-90-STD
06-181407-90-0,50 mm
06-181411-90-1,00 mm
1.750 CKP KV1
2.000 P STD
3.500 CRP STD

