



MERCEDES BENZ PKW - Ø 90,9

87-70479-STDB



**Motor Özellikleri**  
(Engine Specifications)

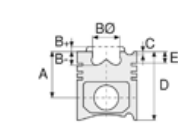
İmalatçı (Manufacturer):  
MERCEDES BENZ PKW  
Çap (Diameter): Ø 90,9  
FM Grup No: 5835

**OM 616.910/912/913/918**  
**/930/940/962/963**

4 Sil. Dizel 2399cc 38/48/53  
Kw (52/65/72 PS) 21:1  
100, 207, 240D, 307,  
407, 507, MB 100,  
O 309, U 600, U 6000  
1978...

**OM 617a.912/913/919/**  
**931/932**

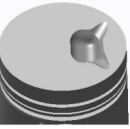
5 Sil. Dizel 2998cc 64,5/66  
Kw (88/90 PS) 21:1  
209, 300 D, 309, 409  
1978 - 1985



**Piston Ölçüleri**  
(Piston Dimensions)

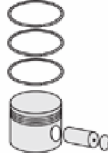
A : 48.350  
B- : 8.750  
C1 : 1.150  
D : 81.850  
E : 14.750

Pim : 26 x 74



**Piston Özellikleri**  
(Piston Features)

Segman Taşıyıcı  
(Ring Carrier)  
Çelik Plaka  
(Steel Strut)  
Gözarası Düz  
(Flat Eye Gap)



**Piston Parça No**  
(Piston Part No)

87-876200-02  
87-70479-STDB

87-876207-02  
87-70479-050B

87-876211-02  
87-70479-100B

87-176700-12  
87-70479-STDC

87-176707-12  
87-70479 050C

87-176711-12  
87-70479 100C



**Segman Seti**  
(Ring Set)

06-876200-00-STD  
06-876207-00-0,50 mm  
06-876211-00-1,00 mm

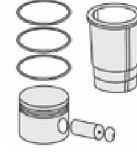
3.000 CRP KV1  
2.000 P STD  
4.000 CRP STD

06-176700-90-STD  
06-176707-90-0,50 mm  
06-176711-90-1,00 mm

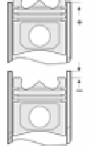
3.000 CKP KV1  
2.000 CKP IKA  
4.000 CRP STD



**Silindir Gömleği**  
(Liner)



**Silindir Kit**  
(Assembly Set)



**Piston - Blok Montaj**  
Yüksekliği  
(Piston - Block  
Assembly Height)

+0,50 / +0,90

