



**Motor Özellikleri**  
(Engine Specifications)

İmalatçı (Manufacturer):  
MERCEDES BENZ PKW  
Çap (Diameter): Ø 91  
FM Grup No: 5836

**OM 616.910/911/916/  
917/918/919**

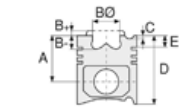
4 Sil. Dizel 2404cc 38/48  
Kw (52/65 PS) 21:1  
207, 307, 309, U 421  
1974 - 1978

**OM 616.912/916/918**

4 Sil. Dizel 2404cc 38/48  
Kw (52/65 PS) 21:1 240D  
1973...

**OM 617.910/912**

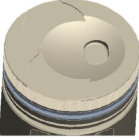
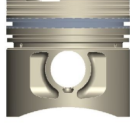
5 Sil. Dizel 3005cc 59  
Kw (80 PS) 21:1 240D 3.0,  
300D  
1974 - 1979



**Piston Ölçüleri**  
(Piston Dimensions)

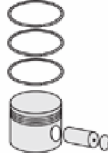
A : 48.350  
B - : 4.200  
BØ : 60.200  
BX : 5.900  
C1 : 1.050  
D : 81.850  
E : 15.300

Pim : 26 x 74



**Piston Özellikleri**  
(Piston Features)

Segman Taşıyıcı  
(Ring Carrier)  
Çelik Plaka  
(Steel Strut)  
Gözarası Düz  
(Flat Eye Gap)



**Piston Parça No**  
(Piston Part No)

87-876300-02  
87-70480-STD  
  
87-876307-02  
87-70480-050A

87-173800-12  
87-70480-STDB

87-173807-12  
87-70480-050B

87-173811-12  
87-70480-100B



**Segman Seti**  
(Ring Set)

06-876300-00-STD  
06-876307-00-0,50 mm  
06-876311-00-1,00 mm  
  
3.000 CRP KV1  
2.000 P STD  
4.000 CRP STD

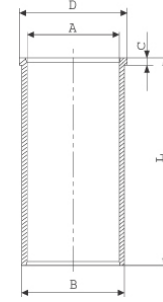
06-173800-90 STD  
06-173807-90 0,50 mm  
06-173811-90 1,00 mm

3.000 CK KV1  
2.000 CKP IKA  
4.000 CRP STD



**Silindir Gömleği**  
(Liner)

14-021350-00-D  
B : 94.000  
L : 158.400  
D : 96.000  
C : 4.700

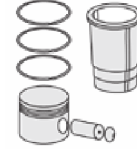


14-021351-00-D  
B : 94.500  
L : 158.400  
D : 96.500  
C : 4.700

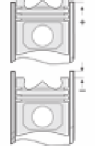
Dış Çap 0,50mm Farklı  
(Outside Diameter  
0.50mm Different)

14-021352-00-D  
B : 95.000  
L : 158.400  
D : 97.000  
C : 4.700

Dış Çap 1,00mm Farklı  
(Outside Diameter  
1.00mm Different)



**Silindir Kit**  
(Assembly Set)



**Piston - Blok Montaj**  
Yüksekliği  
(Piston - Block  
Assembly Height)

+0,50 / +0,90

