

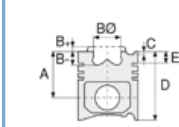


Motor Özellikleri
(Engine Specifications)

İmalatçı (Manufacturer):
MERCEDES BENZ LKW
Çap (Diameter): Ø 97
FM Grup No: 5943

OM 352A, OM 353A

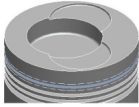
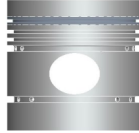
6 Sil. Dizel 5675cc
125 Kw (170 PS) 17:1
Turbo
1013, 1017, 1113, 1213,
1217, 1313, 1417, 1513,
1613, 1617, 1813, 322,
327, 911, 917, O 321
1971....



Piston Ölçüleri
(Piston Dimensions)

A : 65.200
B - : 20.000
BØ : 55.000
BX : 5.000
C1 : 2.400
D : 115.700
E : 17.000

Pim: 36 x 82,5



Piston Özellikleri
(Piston Features)

Segman Taşıyıcı
(Ring Carrier)
Gözarası Düz
(Flat Eye Gap)



Piston Parça No
(Piston Part No)

87-174300-22
87-70491-STD C
87-174307-22
87-70491 050C
87-174311-22
87-70491 100C
87-174314-22
87-70491 150C



Segman Seti
(Ring Set)

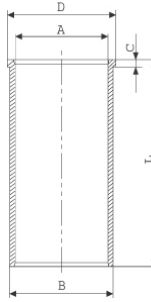
06-174300-70-STD
06-174307-70 0,50 mm
06-174311-70 1,00 mm

3.000 CR KVI
3.000 GOE
3.000 GOE
5.500 CR GOE
5.500 STD



Silindir Gömleği
(Liner)

14-021850-00-D
B : 101.000
L : 222.000
D : 103.500
C : 5.500



14-021851-00-D
B : 102.000
L : 222.000
D : 104.500
C : 5.500

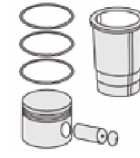
Dış Çap 1,0 mm Farklı
(Outer Diameter
1,0 mm Different)

14-021852-00 D
B : 103.000
L : 222.000
D : 105.500
C : 5.500

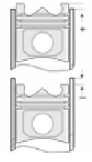
Dış Çap 2,0 mm Farklı
(Outer Diameter
2,0 mm Different)

14-021853-00 D
B : 101.500
L : 222.000
D : 104.000
C : 5.500

Dış Çap 0,50 mm Farklı
(Outer Diameter
0,50 mm Different)



Silindir Kit
(Assembly Set)



Piston - Blok Montaj
Yüksekliği
(Piston - Block
Assembly Height)

- 0,07 / + 0,30

