



**Motor Özellikleri**  
(Engine Specifications)

İmalatçı (Manufacturer):  
MERCEDES BENZ LKW  
Çap (Diameter): Ø 97  
FM Grup No: 5947

**OM 314A**

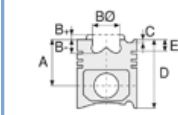
4 Sil. Dizel 3780cc  
63 Kw (85 PS) 16:1  
Turbo  
MB TRAC 900  
1982 - 1986

**OM 352A, OM 353A**

6 Sil. Dizel 5675cc 92/123  
Kw (125/168 PS) 17:1  
Turbo  
1017, 1217, 1300, 1417,  
1500, 1617, U 1000,  
U 1250, U 1300,  
U 1500, U 1700  
1982 - 1986

**OM 362LA.906/  
909/910**

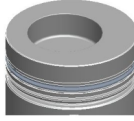
6 Sil. Dizel 5675cc 141  
Kw (192 PS) 17:1  
Turbo  
1419, 1420, 1619,  
1620, 2219, 2220  
1982 - 1986



**Piston Ölçüleri**  
(Piston Dimensions)

A : 65.200  
B - : 21.500  
BØ : 55.000  
BX : 5.000  
D : 105.200  
E : 21.000

Pim: 36 x 82,5



**Piston Özellikleri**  
(Piston Features)

Segman Taşıyıcı  
(Ring Carrier)  
Gözarası Düz  
(Flat Eye Gap)



**Piston Parça No**  
(Piston Part No)

87-178200-53  
87-70496-STD1B  
0,30 mm Kısa (Short)

87-178200-54  
87-70496-STD2B  
0,60 mm Kısa (Short)

87-178200-52  
87-70496-STDB

87-178207-52  
87-70496 050B

87-178211-52  
87-70496 100B



**Segman Seti**  
(Ring Set)

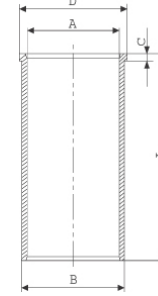
06-178200-80-STD  
06-178207-80 0,50 mm  
06-178211-80 1,00 mm

2.500 CK KV1  
2.500 CK STD  
4.000 CR STD



**Silindir Gömleği**  
(Liner)

14-021850-00-D  
B : 101.000  
L : 222.000  
D : 103.500  
C : 5.500



14-021851-00-D  
B : 102.000  
L : 222.000  
D : 104.500  
C : 5.500

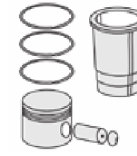
Dış Çap 1,0 mm Farklı  
(Outer Diameter  
1,0 mm Different)

14-021852-00 D  
B : 103.000  
L : 222.000  
D : 105.500  
C : 5.500

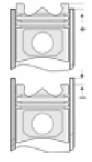
Dış Çap 2,0 mm Farklı  
(Outer Diameter  
2,0 mm Different)

14-021853-00 D  
B : 101.500  
L : 222.000  
D : 104.000  
C : 5.500

Dış Çap 0,50 mm farklı  
(Outer Diameter  
0,50 mm Different)



**Silindir Kit**  
(Assembly Set)



**Piston - Blok Montaj**  
Yüksekliği  
(Piston - Block  
Assembly Height)

- 0,07 / + 0,30

