



**Motor Özellikleri**  
(Engine Specifications)

İmalatçı (Manufacturer):  
OPEL-FIAT  
Çap (Diameter): Ø 69,6  
FM Grup No: 2826

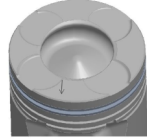
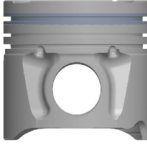
**188.A9.000 -16V**

4 Sil. Dizel 1248cc  
70 PS 18:1 Turbo  
Common rail, Intercooled  
/ Opel ile ortak motor  
(With Opel Common  
Engine) ALBEA 1.3  
MULTIJET,  
DOBLO 1.3 MULTIJET,  
PALIO 1.3 MULTIJET  
2003...

**Piston Ölçüleri**  
(Piston Dimensions)

A : 40.430  
B : 12.400  
BØ : 37.000  
C1 : 1.000  
C2 : 1.200  
D : 63.430  
E : 7.500

Pim : 23 x 56,7



**Piston Özellikleri**  
(Piston Features)

Segman Taşıyıcı  
(Ring Carrier)  
Yağ Püskürtme Oyuğu  
(Oil Jet Cut-Out)  
Gözarası Konik  
(Conical Eye Gap)

**Piston Parça No**  
(Piston Part No)

87-844406-23  
87-70706-0401B  
0,20 mm Kısa (Short)

87-844406-24  
87-70706-04020B  
0,40 mm Kısa (Short)

87-844410-23  
87-70706-08010B  
0,20 mm Kısa (Short)

87-844410-24  
87-70706-08020B  
0,40 mm Kısa (Short)

87-844400-23  
87-70706-STD1B  
0,20 mm Kısa (Short)

87-844400-24  
87-70706-STD2B  
0,40 mm Kısa (Short)

87-844400-22  
87-70706-STDB

87-844406-22  
87-70706-0,40B

87-844410-22  
87-70706-0,80B

**Segman Seti**  
(Ring Set)

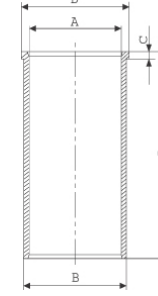
06-844400-00-STD  
06-844406-00-0,40 mm  
06-844410-00-0,80 mm

2.000 CKP KV4  
1.500 P F14  
2.000 CRP GOE

Yağ Segmanı Matkap Delik  
(Oil Ring Drill Hole)

**Silindir Gömleği**  
(Liner)

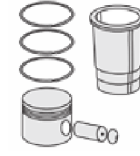
14-022060-00-D  
B : 72.500  
L : 142.000  
D : 74.000  
C : 5.000



14-022061-00-D  
B : 73.000  
L : 142.000  
D : 74.500  
C : 5.200

Dış Çap 0,50 mm Farklı  
(Outside Diameter  
0.50 mm Different)

**Silindir Kit**  
(Assembly Set)



**Piston - Blok Montaj**  
Yüksekliği  
(Piston - Block  
Assembly Height)

0,67 / 0,77 mm  
Conta İle (With Gasket)  
+0,02 / +0,13

0,77 / 0,87 mm  
Conta İle (With Gasket)  
+0,13 / +0,23

0,87 / 0,97 mm  
Conta İle (With Gasket)  
+0,23 / +0,33

