

Motor Özellikleri
(Engine Specifications)

İmalatçı (Manufacturer):
Renault-Fiat-Opel-Iveco
LKW-Peugeot-Citroen
Çap (Diameter): 94,4
FM Grup No: 1909

S9W700-702

4 Sil. Dizel 2800cc
75 Kw (102 PS) 18,5:1
SOFIM Turbo Intercooled
/ Motor No: 2572280 -->
MASTER 2.8 TDI
2001 - 2003

8140.23.2585/

8140.43.2585

4 Sil. Dizel 2800cc
85 Kw (115 PS) 18,5:1
Sofim Turbo Intercooled
Ducato 2.8 TD
1996....

SOFIM Turbo

4 Sil. Dizel 2798cc
76 Kw (103 PS) 18,5:1
SOFIM Turbo Intercooled
Euro 2
Motor No: 2572280 -->
MOVANO 2,8 TD
1996....

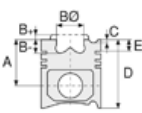
**8140.23.2585/8140.
43.2585**

4 Sil. Dizel 2800cc
85 Kw (115 PS) 18,5:1
SOFIM Turbo Intercooled
Motor No: 2572280 -->
49.10, 49.12, M14
MINIBUS,
TURBO DAILY 35.12
1999 - 2003

8140.23.2585/

8140.43.2585

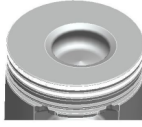
4 Sil. Dizel 2800cc
75 KW (102 PS) 18,5:1
Sofim, Turbo, Intercool
Boxer 2.8 TD



Piston Ölçüleri
(Piston Dimensions)

A : 58.750
B - : 19.400
BØ : 39.500
BX : 3.600
BY : 3.000
D : 87.600
E : 8.850

Pim: 32 x 72



Piston Özellikleri
(Piston Features)

Segman Taşıyıcı
(Ring Carrier)
Soğutma Kanallı
(Coolin Gallery)
Yağ Püskürtme Oyuğu
(Oil Jet Cut-out)
Gözarası Konik
(Conical Eye Gap)



Piston Parça No
(Piston Part No)

87-854800-02
87-70714-STD

87-854806-02
87-70714-040

87-854808-02
87-70714 0,60

87-854800-03
87-70714-STD1
0,20mm Kısa (Short)



Segman Seti
(Ring Set)

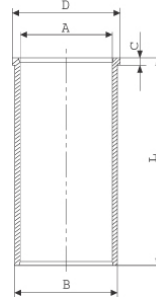
06-854800-00-STD
06-854806-00 0,40 mm
06-854808-00 0,60 mm

2.500 CKP KV1
2.000 P F14
2.500 CRP STD



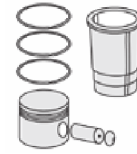
Silindir Gömleği
(Liner)

14-020070-00-D
B : 97.500
L : 167.000
D : 100.900
C : 5.000

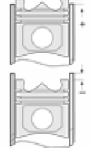


14-020071-00-D
B : 98.000
L : 167.000
D : 101.400
C : 5.000

Dış Çap 0,50mm Farklı
(Outer Diameter
0,50mm Different)



Silindir Kit
(Assembly Set)



Piston - Blok Montaj
Yüksekliği
(Piston - Block
Assembly Height)

1,20 mm conta ile
(With Notch) +0,40/+0,50

1,30 mm conta ile
(With Notch) +0,51/+0,60

1,40 mm conta ile
(With Notch)+0,61 / +0,70

1,50 mm conta ile
(With Notch)+0,71 / +0,80

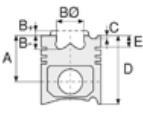




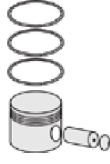
Motor Özellikleri
(Engine Specifications)

8140.23.2585/3700
4 Sil. Dizel 2800cc
75 KW (102PS)
JUMPER 2.8 TD

Renault, Fiat, Opel, Iveco
LKW, Peugeot ve Citroen
ile ortak motor (Common
Engine With Renault, Fiat,
Opel, Iveco LKW, Peugeot
and Citroen)



Piston Ölçüleri
(Piston Dimensions)



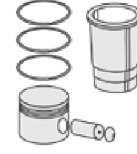
Piston Parça No
(Piston Part No)



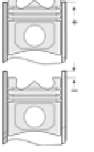
Segman Seti
(Ring Set)



Silindir Gömleği
(Liner)



Silindir Kit
(Assembly Set)



Piston - Blok Montaj
Yüksekliği
(Piston - Block
Assembly Height)

