

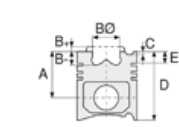


Motor Özellikleri
(Engine Specifications)

İmalatçı (Manufacturer):
IVECO TRK
Çap (Diameter): 85
FM Grup No: 4128

614.000
2 Sil. Dizel 1135cc 13
Kw(18 PS) 21.5:1
Angledozer 18, La Piccola
18

615.000
4 Sil. Dizel 2270cc
29.5 Kw(40 PS) 21.5:1
441R, 451 C, JC412R, R411,
R411J
1965 - 1968



Piston Ölçüleri
(Piston Dimensions)

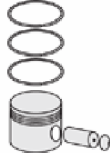
A : 50.300
B- : 4.500
D : 90.000
E : 7.500

Pim: 28 x 69



Piston Özellikleri
(Piston Features)

Gözarası Düz
(Flat Eye Gap)



Piston Parça No
(Piston Part No)

87-200000-02
87-70749-STD

87-200006-02
87-70749 040

87-200008-02
87-70749 060



Segman Seti
(Ring Set)

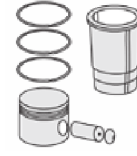
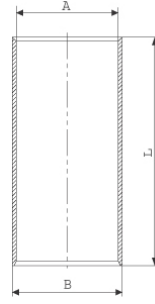
06-200000-10-STD
06-200006-10 0,40 mm
06-200008-10 0,60 mm

3.000 CRP IKA
3.000 P STD
3.000 P STD
5.500 CRP STD

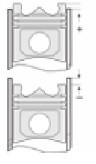


Silindir Gömleği
(Liner)

14-011240-00-D
B : 90.000
L : 178.000



Silindir Kit
(Assembly Set)



Piston - Blok Montaj
Yüksekliği
(Piston - Block
Assembly Height)

