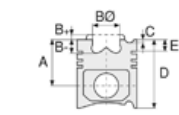


**Motor Özellikleri**  
(Engine Specifications)

İmalatçı (Manufacturer):  
IVECO TRK  
Çap (Diameter): 100  
FM Grup No: 4108

**8035.06**  
3 Sil. Dizel 2710cc 41 Kw  
(56 PS)  
TRAKTOR 54 C,  
TRAKTOR 55-56  
1985 - 1988

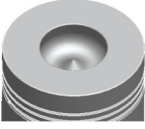
**8040.02, 8045.06**  
4 Sil. Dizel 3613cc 52 Kw  
(70PS)  
TRAKTOR 70-56,  
TRAKTOR 70-56 DT,  
TRAKTOR 70-66  
1985....



**Piston Ölçüleri**  
(Piston Dimensions)

A : 65.100  
B- : 22.700  
BØ : 49.100  
D : 108.500  
E : 17.600

Pim: 38 x 85



**Piston Özellikleri**  
(Piston Features)

Gözarası Düz  
(Flat Eye Gap)



**Piston Parça No**  
(Piston Part No)

87-836300-32  
87-70771-STDC  
  
87-836306-32  
87-70771 040C  
  
87-836308-32  
87-70771 060C



**Segman Seti**  
(Ring Set)

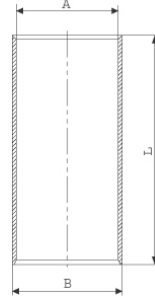
06-836300-30-STD  
06-836306-30 0,40 mm  
06-836308-30 0,60 mm

2.500 CRP KV1  
2.500 P IKA  
4.000 CRP STD

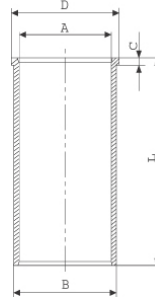


**Silindir Gömleği**  
(Liner)

14-010780-00-D  
B : 103.000  
L : 196.000

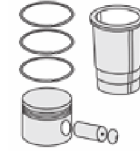


14-020090-00-D  
B : 103.000  
L : 196.000  
D : 104.000  
C : 5.000

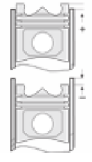


14-020091-00-D  
B : 103.500  
L : 196.000  
D : 104.500  
C : 5.500

Dış çap 0,50 mm farklı  
(Outer Diameter  
0,50mm Different)



**Silindir Kit**  
(Assembly Set)



**Piston - Blok Montaj**  
**Yüksekliği**  
(Piston - Block  
Assembly Height)

+ 0,365 / + 0,761

