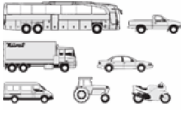




IVECO TRK - Ø 103

87-70773-STD



**Motor Özellikleri**  
(Engine Specifications)

İmalatçı (Manufacturer):  
IVECO TRK  
Çap (Diameter): 103  
FM Grup No: 4109

**8035.04**  
3 Sil. Dizel 2748cc 40/43  
Kw (55/58 PS) 17:1  
505 CS, 565 C, 566 DT,  
570 V/F/DTF/DT, 580 DT,  
588 R 8056, C 8066  
1980 - 1983

**8031.06**  
3 Sil. Dizel 2749cc 37/38  
Kw (50/52 PS) 17:1  
RADIADER BENTRA 215,  
RAUPE FL4L

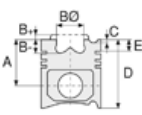
**8040.04.200**  
4 Sil. Dizel 3666cc 63 Kw  
(85 PS) 17:1  
TRAKTOR 50-55  
1978 - 1986

**8041.04 ,8045.04.  
300**  
4 Sil. Dizel 3666cc 63 Kw  
(85 PS) 17:1  
765 C, 766 DT, 780 DT,  
788 R 8076 FL5, 855 C  
1975 - 1984

**8055.04.200**  
5 Sil. Dizel 5380cc 63/66  
Kw (86/90 PS) 17:1  
880-5 DT/S, 955 C Fr7  
1980 - 1984

**8065.04.200**  
6 Sil. Dizel 5496cc 60/85  
Kw (82/115 PS) 17:1  
1000 S/DT, 1180 DT, Fl7  
1976 - 1979

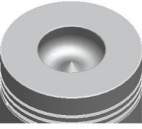
**8060.04.060**  
6 Sil. Dizel 5499cc 96/  
123,5 Kw (130/168 PS) 17:1



**Piston Ölçüleri**  
(Piston Dimensions)

A : 59.650  
B- : 22.700  
BØ : 50.000  
D : 101.150  
E : 19.600

Pim: 34 x 89,8



**Piston Özellikleri**  
(Piston Features)

Gözarası Düz  
(Flat Eye Gap)



**Piston Parça No**  
(Piston Part No)

87-034160-02  
87-70773-STD  
87-034108-02  
87-70773 060



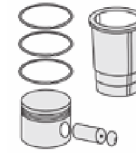
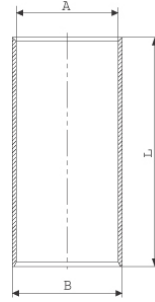
**Segman Seti**  
(Ring Set)

06-034160-10-STD  
06-034168-10 0,60 mm  
2.500 CRP KV1  
2.500 P IKA  
4.000 CRP STD

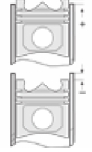


**Silindir Gömleği**  
(Liner)

14-010180-00-D  
B : 107.000  
L : 187.000



**Silindir Kit**  
(Assembly Set)



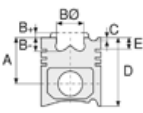
**Piston - Blok Montaj**  
**Yüksekliği**  
(Piston - Block  
Assembly Height)

+ 0,465 / + 0,785

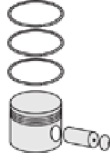


**Motor Özellikleri**  
(Engine Specifications)

100, 110, 315, 65, 79, 80,  
90, 95, IVECO 115, IVECO  
135  
1978 - 1986



**Piston Ölçüleri**  
(Piston Dimensions)



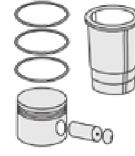
**Piston Parça No**  
(Piston Part No)



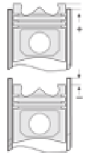
**Segman Seti**  
(Ring Set)



**Silindir Gömleği**  
(Liner)



**Silindir Kit**  
(Assembly Set)



**Piston - Blok Montaj**  
**Yüksekliği**  
(Piston - Block  
Assembly Height)

