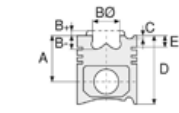




**Motor Özellikleri**  
(Engine Specifications)

İmalatçı (Manufacturer):  
PEUGEOT-ISUZU  
Çap (Diameter): Ø 93  
FM Grup No: 3914

**4JB1**  
4 Sil. Dizel 2771cc 57  
Kw (78 PS)  
Peugeot ile ortak motor  
(With Peugeot Common  
Engine) / Yeni Model  
(New Model)  
J9 Premium  
NKR 55  
1985...



**Piston Ölçüleri**  
(Piston Dimensions)

A : 51.850  
B - : 19.500  
BØ : 43.900  
BX : 4.000  
BY : 1.000  
C1 : 0.550  
D : 91.850  
E : 14.000

Pim : 31 x 76



**Piston Özellikleri**  
(Piston Features)

Segman Taşıyıcı  
(Ring Carrier)  
Çelik Plaka  
(Steel Strut)  
Yağ Püskürtme Oyuğu  
(Oil Jet Cut-Out)  
Gözarası Konik  
(Conical Eye Gap)



**Piston Parça No**  
(Piston Part No)

87-246200-22  
87-71233-STD



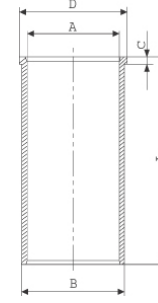
**Segman Seti**  
(Ring Set)

06-246200-00-STD  
2.000 P GOE  
2.000 P STD  
4.000 P GOE



**Silindir Gömleği**  
(Liner)

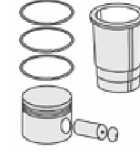
14-021460-10-DH  
B : 95.040  
L : 181.000  
D : 101.000  
C : 0.820



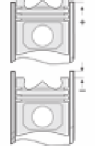
İçi Krom Kaplı  
(Chrome Plated)  
Çelik Gömlek  
(Steel Shirt)

14-021461-10-DH  
B : 95.250  
L : 181.000  
D : 101.000  
C : 0.820

Dış çap 0,25 mm farklı  
(Outer Diameter  
0.25 mm Different  
Semi-finished)



**Silindir Kit**  
(Assembly Set)



**Piston - Blok Montaj**  
Yüksekliği  
(Piston - Block  
Assembly Height)

1 Kertik Conta  
(Notch Gasket) 1,50 mm  
+0,71 / +0,77  
2 Kertik Conta  
(Notch Gasket) 1,55 mm  
+0,77 / +0,81  
3 Kertik Conta  
(Notch Gasket) 1,60 mm  
+0,81 / +0,87

