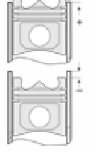




KHD - Ø 102

87-71306-STD



**Motor Özellikleri**  
(Engine Specifications)

İmalatçı (Manufacturer):  
KHD  
Çap (Diameter): Ø 102  
FM Grup No: 450116

**F 3L 914**  
3 Sil. Dizel 41-89  
KW-56-121PS Agropius  
1997...

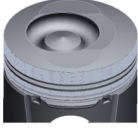
**F 4L 914**  
4 Sil. Dizel 41-89  
KW-56-121PS  
Sabit Motor (Fixed Engine)  
1997...

**F 5L 914**  
5 Sil. Dizel 41-89  
KW-56-121PS  
Sabit Motor (Fixed Engine)  
1997...

**Piston Ölçüleri**  
(Piston Dimensions)

A : 65.600  
B - : 13.450  
B : 3.350  
BØ : 56.500  
BX : 6.000  
C1 : 1.510  
D : 114.450  
E : 15.350

Pim : 35 x 80






**Piston Özellikleri**  
(Piston Features)

Soğutma Kanallı  
(Cooling Gallery)  
Yağ Püskürtme Oyuğu  
(Oil Jet Cut-Out)  
Gözarası Düz  
(Flat Eye Gap)

**Piston Parça No**  
(Piston Part No)

87-135000-02  
87-71306-STD  
87-135007-02  
87-71306-0,50

**Segman Seti**  
(Ring Set)

06-135000-80-STD  
06-135007-80-0,50 mm  
2.940  CK KV1  
2.000  F14  
3.000  CR GOE

**Silindir Gömleği**  
(Liner)

**Silindir Kit**  
(Assembly Set)

**Piston - Blok Montaj**  
Yüksekliği  
(Piston - Block  
Assembly Height)

