



KHD - Ø 91

87-71309-STD A



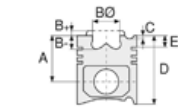
Motor Özellikleri
(Engine Specifications)

İmalatçı (Manufacturer):
KHD
Çap (Diameter): Ø 91
FM Grup No: 4502

F2 L 1011 F
2 Sil. Dizel 1366cc 21
Kw (29 PS)

F3 L 1011 F
3 Sil. Dizel 2049cc 31
Kw (42 PS)
1988 - 1990

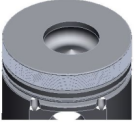
F4 L 1011 F
4 Sil. Dizel 2732cc 42
Kw (57 PS)
1988 - 1990



Piston Ölçüleri
(Piston Dimensions)

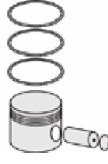
A : 55.370
B - : 19.800
BØ : 40.000
BX : 3.000
BY : 1.500
D : 86.370
E : 16.100

Pim : 26 x 65



Piston Özellikleri
(Piston Features)

Gözarası Konik
(Conical Eye Gap)



Piston Parça No
(Piston Part No)

87-252500-14
87-71309-STD2
- 0,20 mm Kısa (Short)

87-252500-12
87-71309-STD A

87-252507-12
87-71309-050A

87-252511-12
87-71309-100A

87-862800-22
87-71309-STD B

87-862807-22
87-71309-050B



Segman Seti
(Ring Set)

06-252500-20-STD
06-252507-20-0,50 mm
06-252511-20-1,00 mm

2.000 CR KV1
2.000 STD
3.000 STD

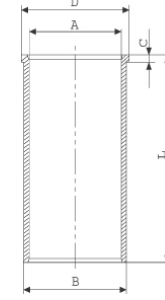
06-862800-20-STD
06-862807-20-0,50 mm

2.000 CR KV1
2.000 GOE
3.000 GOE



Silindir Gömleği
(Liner)

14-021040-00-D
B : 94.100
L : 175.500
D : 99.000
C : 5.000



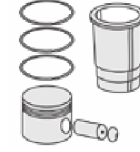
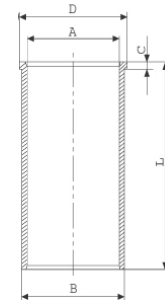
14-021040-00-D

14-021041-00-D
B : 94.600
L : 175.500
D : 99.500
C : 5.500

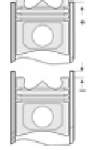
Dış Çap 0,50mm Farklı
(Outside Diameter
0,50mm Different)

14-021041-00 D
Dış Çap 0,50mm Farklı
(Outside Diameter
0,50mm Different)

14-029750-00-DH
B : 94.010
L : 175.500
D : 98.900



Silindir Kit
(Assembly Set)



Piston - Blok Montaj
Yüksekliği
(Piston - Block
Assembly Height)

1 Kertik (Notch) 0,59 / 0,69

2 Kertik (Notch) 0,69 / 0,76

3 Kertik (Notch) 0,76 / 0,83

