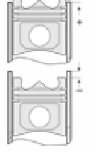
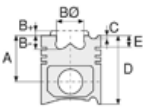




KHD - Ø 94

87-71317-STD A



Motor Özellikleri
(Engine Specifications)

İmalatçı (Manufacturer):
KHD
Çap (Diameter): Ø 94
FM Grup No: 450101

F 2 M 2011 Euro2
2 Sil. Dizel 1550cc 24
Kw(33 Hp) 19:1
ENDÜSTRİYEL (Industrial)
2004...

F 3 M 2011 Euro2
3 Sil. Dizel 2330cc 36,5
Kw(50 Ps) 19:1
ENDÜSTRİYEL (Industrial)
2004...

F 4 M 2011 Euro2
4 Sil. Dizel 3110cc 48,5
Kw(66 Ps) 19:1
ENDÜSTRİYEL (Industrial)
2004...

F 2 L 2011 Euro2
2 Sil. Dizel 1550cc 23
Kw(32 Ps) 19:1
ENDÜSTRİYEL (Industrial)
2004...

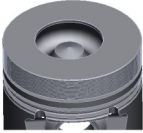
F 3 L 2011 Euro2
3 Sil. Dizel 2330cc 36
Kw(49 Ps) 19:1
ENDÜSTRİYEL (Industrial)
2004....

F 4 L 2011 Euro2
4 Sil. Dizel 3110cc 48
Kw(65 Ps) 19:1
ENDÜSTRİYEL (Industrial)
2004...

Piston Ölçüleri
(Piston Dimensions)

A : 51.700
B - : 19.000
BØ : 46.000
BX : 2.000
BY : 0.800
D : 81.650
E : 16.000

Pim : 26 x 65



Piston Özellikleri
(Piston Features)

Gözarası Düz
(Flat Eye Gap)

Piston Parça No
(Piston Part No)

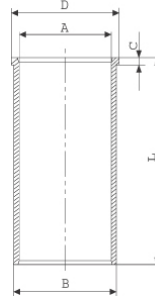
87-146500-12
87-71317-STD A
87-146507-12
87-71317-050A

Segman Seti
(Ring Set)

06-146500-20-STD
06-146507-20-0,50 mm
2.000 CR KV1
2.000 F14
3.000 F14
Goetze® LKZ-Ring®

Silindir Gömleği
(Liner)

14-021750-00-D
B : 97.000
L : 175.000
D : 98.500
C : 5.000



Silindir Kit
(Assembly Set)

Piston - Blok Montaj
Yüksekliği
(Piston - Block
Assembly Height)

