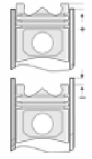
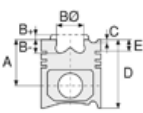
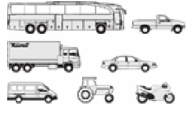




KHD - Ø 100

87-71325-STDA



**Motor Özellikleri**  
(Engine Specifications)

İmalatçı (Manufacturer):  
KHD  
Çap (Diameter): Ø 100  
FM Grup No: 4509

**F1 L 511 D**  
1 Sil. Dizel 825cc 13  
Kw (17,5 PS) 1978 - 1992

**F2 L 511 D**  
2 Sil. Dizel 1560cc 26  
Kw (35 PS)  
1978 - 1992

**Piston Ölçüleri**  
(Piston Dimensions)

A : 56.750  
B- : 15.740  
B : 5.700  
BØ : 50.000  
BX : 7.000  
C1 : 2.350  
D : 90.250  
E : 14.600

Pim : 35 x 75



**Piston Özellikleri**  
(Piston Features)

Çelik Plaka  
(Steel Strut)  
Gözarası Düz  
(Flat Eye Gap)

**Piston Parça No**  
(Piston Part No)

87-741800-12  
87-71325-STDA  
87-741807-12  
87-71325-050A  
87-741811-12  
87-71325-100A

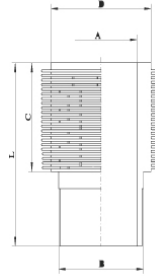
**Segman Seti**  
(Ring Set)

06-741800-20-STD  
06-741807-20-0,50 mm  
06-741811-20-1,00 mm

2.940 CR IKA  
2.550 STD  
5.000 CR STD

**Silindir Gömleği**  
(Liner)

14-900040-00-WH  
B : 109.400  
L : 185.700  
D : 119.800  
C : 118.900



**Silindir Kit**  
(Assembly Set)

88-741800-12-STD  
88-71325-STDA

**Piston - Blok Montaj**  
Yüksekliği  
(Piston - Block  
Assembly Height)

+1,02 / +1,20

