

**Motor Özellikleri**  
(Engine Specifications)

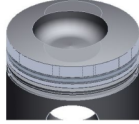
İmalatçı (Manufacturer):  
KHD  
Çap (Diameter): Ø 102  
FM Grup No: 4515  
**BF6 L 913, BF6 L 913 C**  
6 Sil. Dizel 6129cc 107/117,5  
Kw (146/160 PS) 15, 5:1  
Turbo  
1982...

**BF6 L 913, BF6 L 913 C**  
6 Sil. Dizel 6129cc 131  
Kw (178 PS) 15, 5:1  
Turbo Intercooled  
13006 A, M 160 L 81,  
M 160 M 13 FL,  
M 168 M 8 FLL,  
M 30 M 8 FL  
1982...

**Piston Ölçüleri**  
(Piston Dimensions)

A : 69.100  
B - : 16.600  
B : 6.000  
BØ : 58.000  
BX : 2.000  
D : 123.600  
E : 15.600

Pim : 40 x 80



**Piston Özellikleri**  
(Piston Features)

Segman Taşıyıcı  
(Ring Carrier)  
Soğutma Kanallı  
(Cooling Gallery)  
Gözarası Düz  
(Flat Eye Gap)

**Piston Parça No**  
(Piston Part No)

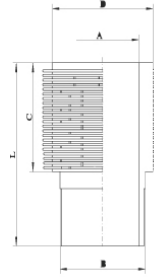
87-252600-12  
87-71327-STD A  
87-252607-12  
87-71327-050 A  
87-252300-32  
87-71327-STD B

**Segman Seti**  
(Ring Set)

06-252600-80-STD  
06-252607-80-0,50 mm  
2.940 CK KV1  
3.000 IKA  
3.500 CR STD

**Silindir Gömleği**  
(Liner)

14-900060-00-WH  
B : 109.800  
L : 220.400  
D : 124.500  
C : 135.400



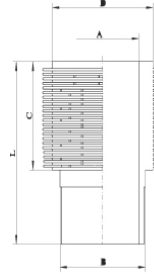
**Silindir Kit**  
(Assembly Set)

88-252600-12-STD  
88-71327-STD A

**Piston - Blok Montaj**  
Yüksekliği  
(Piston - Block  
Assembly Height)

+1,00 / +1,20

14-900100-00-WH  
B : 109.500  
L : 222.300  
D : 120.000  
C : 137.300



88-252300-32-STD  
88-71327-STD B

87-861800-32  
87-71332-STD B

87-861807-32  
87-71332-050 B

87-861811-32  
87-71332-100 B

06-861800-80-STD  
06-861807-80-0,50 mm  
06-861811-80-1,00 mm

3.000 CK KV1  
3.000 CR IKA  
5.000 CR STD

14-900060-00 WH

88-861800-32-STD  
88-71332-STD B

