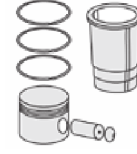
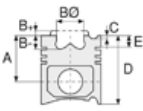




KHD - Ø 102

87-71331-STDC



Motor Özellikleri
(Engine Specifications)

İmalatçı (Manufacturer):
KHD
Çap (Diameter): Ø 102
FM Grup No: 4514

F6 L 913 D
6 Sil. Dizel 6128cc 81/96
Kw (110/132 PS) 17:1
D 7807, DX 120, DX 3.50,
DX 3.90, DX 6.30
1981...

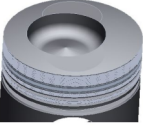
F4 L 913 D
4 Sil. Dizel 4086cc 55
Kw (75 Ps) 1987...

F3 L 913 D
3 Sil. Dizel 3060cc 42-45
KW (57-61 Ps)
1976...

Piston Ölçüleri
(Piston Dimensions)

A : 69.100
B- : 16.600
B : 6.000
BØ : 58.000
BX : 5.000
D : 123.600
E : 15.600

Pim : 35 x 80



Piston Özellikleri
(Piston Features)

Segman Taşıyıcı
(Ring Carrier)
Soğutma Kanallı
(Cooling Gallery)
Yağ Püskürtme Oyuğu
(Oil Jet Cut-Out)
Gözarası Düz
(Flat Eye Gap)

Piston Parça No
(Piston Part No)

87-174600-62
87-71331-STDC
87-174607-62
87-71331-050C
87-174611-62
87-71331-100C

Segman Seti
(Ring Set)

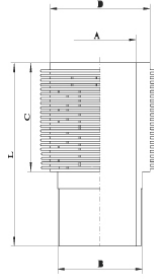
06-174600-80-STD
06-174607-80-0,50 mm
06-174611-80-1,00 mm

3.000 CK KV1
2.500 STD
2.500 STD
5.000 CR STD

Goetze® LKZ-Ring®

Silindir Gömleği
(Liner)

14-900100-00-WH
B : 109.500
L : 222.300
D : 120.000
C : 137.300



Silindir Kit
(Assembly Set)

88-174600-62-STD
88-71331-STDC

Piston - Blok Montaj
Yüksekliği
(Piston - Block
Assembly Height)

+1,00 / +1,20

