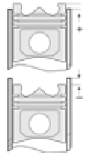
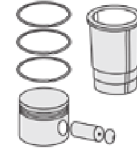
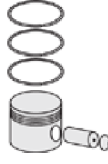




KOMATSU - Ø 102

87-71365-STD



Motor Özellikleri
(Engine Specifications)

İmalatçı (Manufacturer):
KOMATSU
Çap (Diameter): Ø 102
FM Grup No: 4710

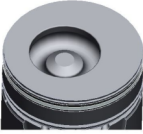
SA-6D-102E-1B

6 Sil.
Cummins İle Ortak Motor
(Common Engine With
Cummins)
320-3 , PC200-6

Piston Ölçüleri
(Piston Dimensions)

A : 71.620
B- : 22.000
BØ : 51.350
BX : 6.100
BY : 1.000
D : 105.400
E : 6.800

Pim: 40 x 83



Piston Özellikleri
(Piston Features)

Segman Taşıyıcı
(Ring Carrier)
Gözarası Konik
(Conical Eye Gap)

Piston Parça No
(Piston Part No)

87-155200-82
87-71365-STD
87-155205-82
87-71365 0,25
87-155207-82
87-71365 0,50

Segman Seti
(Ring Set)

06-155200-10-STD
06-155205-10 0,25 mm
06-155207-10 0,50 mm

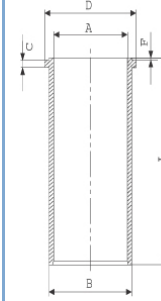
3.000 CRP KV1
2.350 P F14
4.000 CRP STD

Goetze® LKZ-Ring®

Silindir Gömleği
(Liner)

14-040090-00-D

B : 106.070
L : 204.800
D : 109.000
C : 4.050
F : 0.800



Silindir Kit
(Assembly Set)

Piston - Blok Montaj
Yüksekliği
(Piston - Block
Assembly Height)

+0,28 / +0,50

