



**Motor Özellikleri**  
(Engine Specifications)

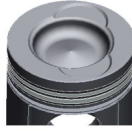
İmalatçı (Manufacturer):  
John Deere  
Çap (Diameter): 115,9  
FM Grup No: 4228

**6466D**  
6 Sil. Dizel  
4250 , 4440, 5720, 7720,  
9940

**Piston Ölçüleri**  
(Piston Dimensions)

A : 70.300  
B- : 19.600  
BØ : 68.600  
C1 : 2.200  
C2 : 2.200  
D : 124.900  
E : 16.500

Pim: 47,61 x 91,45



**Piston Özellikleri**  
(Piston Features)

Çift Segman Taşıyıcı  
Gözarası Konik  
(Double Ring Carrier  
Conical Eye Gap)

**Piston Parça No**  
(Piston Part No)

87-856200-02  
87-71417-STD

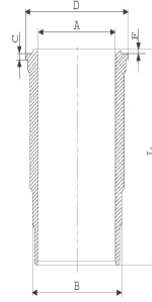
**Segman Seti**  
(Ring Set)

06-856200-00-STD

3.960 CRP KV1  
3.960 CRP KV1  
4.474 CRP KV1

**Silindir Gömleği**  
(Liner)

14-450650-00-WH  
B : 125.080  
L : 232.700  
D : 135.200  
C : 8.200  
F : 1.200



**Silindir Kit**  
(Assembly Set)

88-856200-02-STD  
88-71417-STD

**Piston - Blok Montaj**  
**Yüksekliği**  
(Piston - Block  
Assembly Height)

