



**Motor Özellikleri**  
(Engine Specifications)

İmalatçı (Manufacturer):  
John Deere  
Çap (Diameter): 115,9  
FM Grup No: 4235

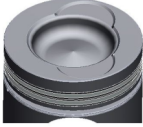
**6466A, 6466T**  
6 Sil. Dizel 7600cc  
4440 TRK, 4640 TRK,  
4840 TRK, 5720, 644D,  
6620, 6622, 740A, 762A,  
7720, 8430 TRK, 8440  
TRK, 8450 TRK, 8820,  
9940



**Piston Ölçüleri**  
(Piston Dimensions)

A : 70.350  
B- : 20.500  
BØ : 68.600  
C1 : 2.000  
C2 : 2.000  
D : 124.900  
E : 16.500

Pim: 47,61 x 91,45



**Piston Özellikleri**  
(Piston Features)

Çift Segman Taşıyıcı  
Gözarası Konik  
(Double Ring Carrier  
Conical Eye Gap)



**Piston Parça No**  
(Piston Part No)

87-856200-22  
87-71418-STD A



**Segman Seti**  
(Ring Set)

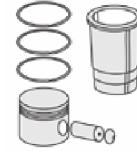
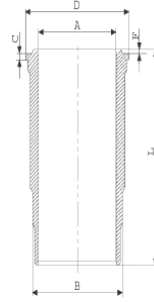
06-856200-00-STD

3.960 CRP KV1  
3.960 CRP KV1  
4.474 CRP KV1



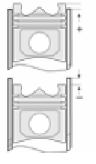
**Silindir Gömleği**  
(Liner)

14-450650-00-WH  
B : 125.080  
L : 232.700  
D : 135.200  
C : 8.200  
F : 1.200



**Silindir Kit**  
(Assembly Set)

88-856200-22-STD  
88-71418-STD A



**Piston - Blok Montaj**  
**Yüksekliği**  
(Piston - Block  
Assembly Height)

87-856500-02  
87-71418-STD

06-856500-90-STD

3.960 CKP KV1  
3.960 CKP KV1  
4.474 CRP STD

14-450650-00-WH

88-856500-02-STD  
88-71418-STD

