



Motor Özellikleri
(Engine Specifications)

İmalatçı (Manufacturer):
John Deere
Çap (Diameter): 115,9
FM Grup No: 4231

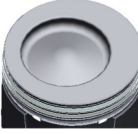
6081 D
6 Sil. Dizel 8100cc
7000 Serisi, 8000 Serisi



Piston Ölçüleri
(Piston Dimensions)

A : 66.550
B- : 15.300
BØ : 73.000
BX : 6.150
D : 111.300
E : 6.500

Pim: 47,61 x 91,45



Piston Özellikleri
(Piston Features)

Çift Segman Taşıyıcı
Gözarası Konik
(Double Ring Carrier
Conical Eye Gap)



Piston Parça No
(Piston Part No)

87-856700-02
87-71419-STD



Segman Seti
(Ring Set)

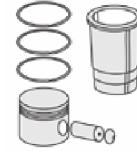
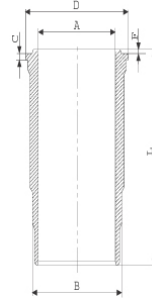
06-856700-90-STD

3.960  CKP KV1
3.250  P KV1
4.000  ST



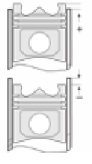
Silindir Gömleği
(Liner)

14-450750-00-WH
B : 125.055
L : 228.000
D : 135.200
C : 12.000
F : 1.200



Silindir Kit
(Assembly Set)

88-856700-02-STD
88-71419-STD



Piston - Blok Montaj
Yüksekliği
(Piston - Block
Assembly Height)

+0,30/+0,50

