



**Motor Özellikleri**  
(Engine Specifications)

İmalatçı (Manufacturer):  
John Deere  
Çap (Diameter): 106,5  
FM Grup No: 4224

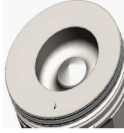
**4045 D/T**  
4 Sil. Dizel  
4 VE 6 SİLİNDİR (Cylinder)  
5410 , 5510, 5615, 5715,  
6700  
2001....



**Piston Ölçüleri**  
(Piston Dimensions)

A : 71.720  
B- : 23.800  
BØ : 57.500  
BX : 3.500  
D : 100.500  
E : 4.100

Pim: 34,925 x 71,7



**Piston Özellikleri**  
(Piston Features)

Segman Taşıyıcı  
(Ring Carrier)  
Gözarası Konik  
(Conical Eye Gap)



**Piston Parça No**  
(Piston Part No)

87-856900-22  
87-71425-STDA



**Segman Seti**  
(Ring Set)

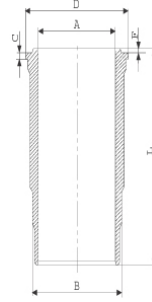
06-856900-90-STD

2.420 CK KV4  
2.390 P STD  
3.465 CRP STD

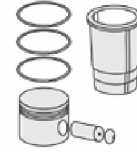


**Silindir Gömleği**  
(Liner)

14-450660-00-WH  
B : 120.000  
L : 219.000  
D : 125.900  
C : 6.050  
F : 0.800

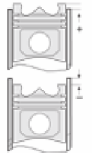


**O-RING BİLGİ (O-Ring Information)**  
24-35027-90/O  
1x 117\*3,50 FPM  
1x 117,07\*3,53 MVQ  
1x 99\*2,3\*3,8 NBR



**Silindir Kit**  
(Assembly Set)

89-856900-22-STD  
89-71425-STDA



**Piston - Blok Montaj**  
**Yüksekliği**  
(Piston - Block  
Assembly Height)

0/0,15

0,40/0,60

