



KHD - Ø 120

87-71508-STD A



Motor Özellikleri
(Engine Specifications)

İmalatçı (Manufacturer):
KHD
Çap (Diameter): Ø 120
FM Grup No: 4524

A 6 L 413, F 6 L 413
6 Sil. Dizel 8480cc 125/130
Kw (170/176 PS) 18:1
120, 170
1968 - 1986

F 8 L 413
8 Sil. Dizel 11310cc
132,5/171 Kw (180/232 PS)
18:1 200, 210, 230, 232
1968 - 1980

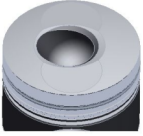
F 10 L 413
10 Sil. Dizel 14140cc
213,5/224,5 Kw
(290/305 PS) 18:1
290, 310

F 12 L 413
12 Sil. Dizel 16960cc
240/250 Kw (326/340 PS)
18:1 120, 170, 200, 210,
230, 232, 290, 310, 340
1968 - 1981

Piston Ölçüleri
(Piston Dimensions)

A : 90.160
B - : 45.550
B + : 5.090
B0 : 46.000
C1 : 1.020
D : 145.250
E : 24.400

Pim : 45 x 96



Piston Özellikleri
(Piston Features)

Segman Taşıyıcı
(Ring Carrier)
Yağ Püskürtme Oyuğu
(Oil Jet Cut-Out)
Gözarası Düz
(Flat Eye Gap)

Piston Parça No
(Piston Part No)

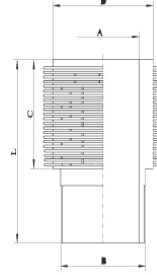
87-167600-12
87-71508-STD A
87-167607-12
87-71508-050A
87-167611-12
87-71508-100A
87-167614-12
87-71508-150A

Segman Seti
(Ring Set)

06-167600-30-STD
06-167607-30-0,50 mm
06-167611-30-1,00 mm
06-167614-30-1,50 mm
3.000 CR IKA
3.000 STD
3.000 STD
6.000 CR STD

Silindir Gömleği
(Liner)

14-900070-00-WH
B : 132.000
L : 255.100
D : 145.000
C : 169.900



Silindir Kit
(Assembly Set)

88-167600-12-STD
88-71508-STD A

Piston - Blok Montaj
Yüksekliği
(Piston - Block
Assembly Height)

+1,10 / +1,30

