



KHD - Ø 125

87-71513-STDC



Motor Özellikleri
(Engine Specifications)

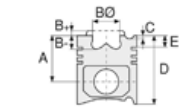
İmalatçı (Manufacturer):
KHD
Çap (Diameter): Ø 125
FM Grup No: 4526

BF6 L 413 F, BF6 L 513 C
6 Sil. Dizel 9572cc 122/177
Kw (152/241 PS) 16, 5:1
Turbo Intercooled
DX 2304, DX8.30
1984...

BF8 L 413 F, BF8 L 513 C
8 Sil. Dizel 212/235
Kw (288/320 PS) 16, 5:1
Turbo Intercooled 190,
2000, 250, 260, 290, 320,
360, 4520, 4530, 4550,
4620, 8000
1984...

BF10 L 413 F, BF10 L 513 C
10 Sil. Dizel 15945cc
265/294 Kw (360/400 PS)
16, 5:1 Turbo Intercooled
190, 320, 360
1984...

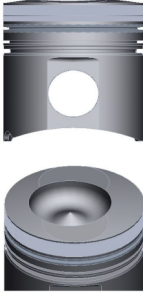
BF12 L 413 F, BF12 L 513 C
12 Sil. Dizel 19140cc 335/353
Kw (456/480 PS) 16, 5:1
Turbo Intercooled
Motor No (Engine NO):
07159125
3000, 3500, 360 D 34 AS,
FKL, FKM, MFS 42, N 4520,
N 4530, N 4540, N 4550,
N 4620
1984...



Piston Ölçüleri
(Piston Dimensions)

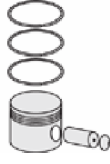
A : 87.400
B - : 22.100
B : 5.250
BØ : 74.000
BX : 4.000
BY : 2.000
C1 : 1.000
C2 : 1.200
D : 138.650
E : 23.000

Pim : 45 x 107



Piston Özellikleri
(Piston Features)

Segman Taşıyıcı
(Ring Carrier)
Sert Anotlama
(Hard Anodizing)
Soğutma Kanallı
(Cooling Gallery)
Yağ Püskürtme Oyuğu
(Oil Jet Cut-Out)
Gözarası Konik
(Conical Eye Gap)



Piston Parça No
(Piston Part No)

87-740300-82
87-71513-STDC
87-740307-82
87-71513-050C
87-740311-82
87-71513-100C



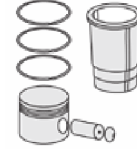
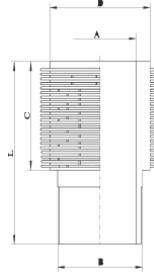
Segman Seti
(Ring Set)

06-740300-80-STD
06-740307-80-0,50 mm
06-740311-80-1,00 mm
3.000 CK KV1
2.500 STD
4.000 CR STD
Goetze® LKZ-Ring®



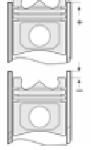
Silindir Gömleği
(Liner)

14-900030-00-WH
B : 139.000
L : 250.800
D : 154.000
C : 169.500



Silindir Kit
(Assembly Set)

88-740300-82-STD
88-71513-STDC



Piston - Blok Montaj
Yüksekliği
(Piston - Block
Assembly Height)

+1,15 / + 1,30

