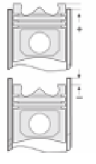
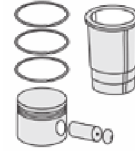
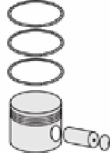
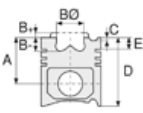




KHD - Ø 128

87-71514-STDC



Motor Özellikleri
(Engine Specifications)

İmalatçı (Manufacturer):
KHD
Çap (Diameter): Ø 128
FM Grup No: 4527

F6 L 513 F
6 Sil. Dizel 10038cc 141
Kw (192 PS) 17:1
1966...

F8 L 513 F
8 Sil. Dizel 13384cc 188
Kw (256 PS) 17:1
1966...

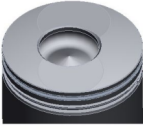
F10 L 513 F
10 Sil. Dizel 16730cc 235
Kw (320 PS) 17:1
1966...

F12 L 513 F
12 Sil. Dizel 20076cc
282 Kw (383PS) 17:1
1966...

Piston Ölçüleri
(Piston Dimensions)

A : 87.150
B - : 30.000
B : 5.500
BØ : 55.000
BX : 3.000
BY : 2.500
C1 : 1.000
C2 : 1.200
D : 138.650
E : 8.200

Pim : 46 x 102



Piston Özellikleri
(Piston Features)

Segman Taşıyıcı
(Ring Carrier)
Sert Anotlama
(Hard Anodizing)
Soğutma Kanallı
(Cooling Gallery)
Yağ Püskürtme Oyuğu
(Oil Jet Cut-Out)
Gözarası Konik
(Conical Eye Gap)

Piston Parça No
(Piston Part No)

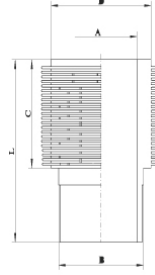
87-740400-22
87-71514-STDC
87-740407-22
87-71514-050C
87-740411-22
87-71514-100C

Segman Seti
(Ring Set)

06-740400-80-STD
06-740407-80-0,50 mm
06-740411-80-1,00 mm
3.500 CK KV1
3.000 STD
4.000 CR STD
Goetze® LKZ-Ring®

Silindir Gömleği
(Liner)

14-000370-00-WH
B : 137.000
L : 250.800
D : 154.000
C : 169.500



Silindir Kit
(Assembly Set)

88-740400-22-STD
88-71514-STDC

Piston - Blok Montaj
Yüksekliği
(Piston - Block
Assembly Height)

+1,10 / + 1,20

