



MAN - Ø 121

87-71565-STD A

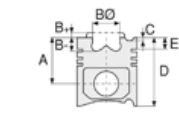


**Motor Özellikleri**  
(Engine Specifications)

İmalatçı (Manufacturer):  
MAN  
Çap (Diameter): Ø 121  
FM Grup No: 5415

**D 2156 HM/HMN/  
MGN/MY/MNY/  
MYN/HNY**

6 Sil. Dizel 10343cc  
142/158/169 Kw  
(192/215/230 PS) 17:1  
10 Ue 192, 10.215,  
12 Ue 192, 12.192,  
12.215, 13.215, 13.230,  
15.192, 15.216, 21.215,  
22.215, 9.192, 9.216,  
SG192, SL192  
1966 - 1971



**Piston Ölçüleri**  
(Piston Dimensions)

A : 94.000  
B - : 48.600  
BØ : 57.900  
D : 162.000  
E : 20.000

Pim: 45 x 102



**Piston Özellikleri**  
(Piston Features)

Segman Taşıyıcı  
(Ring Carrier)  
Sert Anotlama  
(Hard Anodizing)  
Gözarası Düz  
(Flat Eye Gap)



**Piston Parça No**  
(Piston Part No)

87-274800-63  
87-71565-STD1A  
0,20mm Kısa (Short)  
  
87-274800-64  
87-71565-STD2A  
0,40mm Kısa (Short)  
  
87-274800-53  
87-71565-STD3A  
0,60mm Kısa (Short)  
  
87-274800-62  
87-71565-STD A



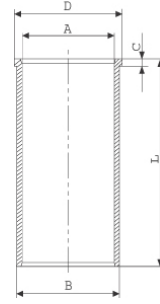
**Segman Seti**  
(Ring Set)

06-274800-20-STD  
  
3.500 CR IKA  
3.000 STD  
3.000 STD  
5.500 CR STD



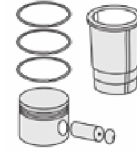
**Silindir Gömleği**  
(Liner)

14-022830-00-DH  
B : 125.990  
L : 287.000  
D : 132.000  
C : 8.000

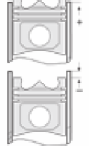


14-022831-00-DH  
B : 126.490  
L : 287.000  
D : 132.000  
C : 8.000

Dış çap 0,50 mm Farklı  
(Outer Diameter  
0,50 mm Different)



**Silindir Kit**  
(Assembly Set)



**Piston - Blok Montaj**  
Yüksekliği  
(Piston - Block  
Assembly Height)

+ 0,05 / + 0,35

