



**Motor Özellikleri**  
(Engine Specifications)

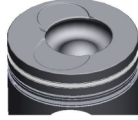
İmalatçı (Manufacturer):  
MITSUBISHI  
Çap (Diameter): Ø 130  
FM Grup No: 6010

**6 D 24T2**  
6 Sil. Dizel 11945cc 350 PS  
Turbocharged Intercool  
SAFİR OTOBÜS  
(Safir Bus)  
(MS827PLGQ)  
2000...

**Piston Ölçüleri**  
(Piston Dimensions)

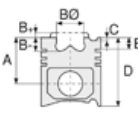
A : 78.120  
B- : 27.100  
BØ : 66.000  
BX : 5.900  
BY : 1.250  
C1 : 0.500  
C2 : 1.500  
D : 153.160  
E : 15.600

Pim : 50 x 106



**Piston Özellikleri**  
(Piston Features)

Segman Taşıyıcı  
(Ring Carrier)  
Sert Anotlama  
(Hard Anodizing)  
Soğutma Kanallı  
(Cooling Gallery)  
Yağ Püskürtme Oyuğu  
(Oil Jet Cut-Out)  
Gözarası Konik  
(Conical Eye Gap)



**Piston Parça No**  
(Piston Part No)

87-876100-02  
87-71595-STD  
87-876100-03  
87-71595-STD1  
0,20 mm Kısa (Short)  
87-876100-04  
87-71595-STD2  
0,40 mm Kısa (Short)



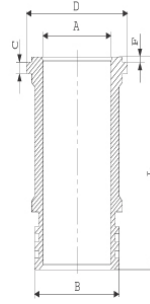
**Segman Seti**  
(Ring Set)

06-876100-30-STD  
3.500 CRP KV1  
3.000 CRP KV1  
4.000 CRP KV1

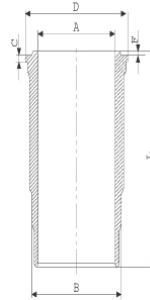


**Silindir Gömleği**  
(Liner)

14-680010-00-WH  
B : 147.000  
L : 251.750  
D : 155.500  
C : 11.500  
F : 1.750

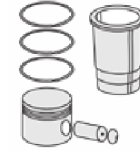


14-680080-00-WH  
B : 147.500  
L : 261.750  
D : 156.000  
C : 12.000  
F : 1.750



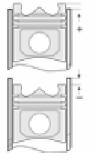
14-680080-00-WH  
B : 147.500  
L : 261.750  
D : 156.000  
C : 12.000  
F : 1.750

Dış Çap 0,50 mm  
Farklı Yarı Mamul  
(Outer Diameter  
0.50 mm Different  
Semi-finished)



**Silindir Kit**  
(Assembly Set)

88-876100-02-STD  
88-71595-STD



**Piston - Blok Montaj**  
Yüksekliği  
(Piston - Block  
Assembly Height)

0,87 / 1,33

