



MITSUBISHI - Ø 135

87-71596-STD



Motor Özellikleri
(Engine Specifications)

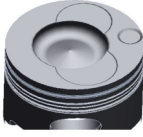
İmalatçı (Manufacturer):
MITSUBISHI
Çap (Diameter): Ø 135
FM Grup No: 6011

8 DC 9/90/91
8 Sil. Dizel 16031cc
PRENSES OTOBUS
(Princess Bus)
(MS715)
1994...

Piston Ölçüleri
(Piston Dimensions)

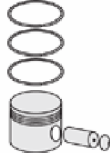
A : 88.300
B : 24.630
BØ : 73.000
BX : 4.350
BY : 0.900
C1 : 1.300
C2 : 1.500
D : 153.000
E : 15.200

Pim : 50 x 112



Piston Özellikleri
(Piston Features)

Segman Taşıyıcı
(Ring Carrier)
Yağ Püskürtme Oyuğu
(Oil Jet Cut-Out)
Gözarası Konik
(Conical Eye Gap)



Piston Parça No
(Piston Part No)

87-875700-02
87-71596-STD



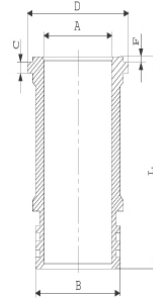
Segman Seti
(Ring Set)

06-875700-00-STD
3.500 CRP KV1
3.000 CRP IKA
3.000 CRP IKA
4.000 NTP ST

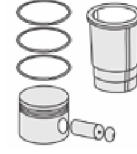


Silindir Gömleği
(Liner)

14-686430-00-WH
B : 154.000
L : 260.000
D : 162.500
C : 11.860
F : 1.600

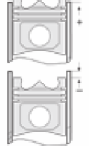


Dış Yüzeyi Krom Kaplı
(Outer Surface
Chrome Plated)



Silindir Kit
(Assembly Set)

88-875700-02-STD
88-71596-STD



Piston - Blok Montaj
Yüksekliği
(Piston - Block
Assembly Height)

+0,75 / +1,35

