



MITSUBISHI - Ø 135

87-71603-STD



Motor Özellikleri
(Engine Specifications)

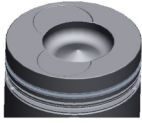
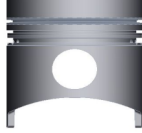
İmalatçı (Manufacturer):
MITSUBISHI
Çap (Diameter): Ø 135
FM Grup No: 6012

8 DC 8-2A
8 Sil. Dizel 14886cc
290 PS MARATON
OTOBUS (Marathon Bus)
(Ms713)
1990...

Piston Ölçüleri
(Piston Dimensions)

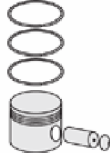
A : 78.150
B- : 23.700
BØ : 70.600
BX : 4.500
BY : 1.500
C1 : 1.350
C2 : 1.500
D : 143.100
E : 23.200

Pim : 45 x 107,8



Piston Özellikleri
(Piston Features)

Segman Taşıyıcı
(Ring Carrier)
Gözarası Konik
(Conical Eye Gap)



Piston Parça No
(Piston Part No)

87-874200-02
87-71603-STD



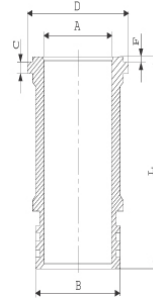
Segman Seti
(Ring Set)

06-874200-10-STD
3.500 CRP KV1
3.000 CRP IKA
6.000 CRP STD

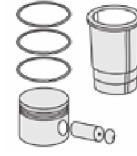


Silindir Gömleği
(Liner)

14-681990-00-WH
B : 154.000
L : 230.000
D : 162.500
C : 11.850
F : 1.600

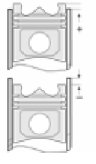


Dış Yüzeyi Krom Kaplı
(Outer Surface
Chrome Plated)



Silindir Kit
(Assembly Set)

88-874200-02-STD
88-71603-STD



Piston - Blok Montaj
Yüksekliği
(Piston - Block
Assembly Height)

+0,75 / +1,35

