



MWM - Ø 105

87-71635-STD



Motor Özellikleri
(Engine Specifications)

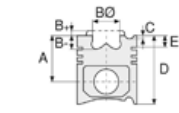
İmalatçı (Manufacturer):
MWM
Çap (Diameter): Ø 105
FM Grup No: 6405

D 226 Z
2 Sil. Dizel 2080cc
29,5 Kw (40 PS) 18:1
ENDUSTRIYEL
(Industrial)
1969 - 1977

D 226 D
3 Sil. Dizel 3120cc 44
Kw (60 PS) 18:1
ENDUSTRIYEL
(Industrial)
1969 - 1977

D 226 V
4 Sil. Dizel 4160cc 59
Kw (80 PS) 18:1
ENDUSTRIYEL
(Industrial)
1969 - 1977

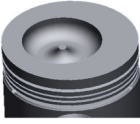
D 226 S
6 Sil. Dizel 6240cc 88,8
Kw (120 PS) 18:1
RVI Renault Truck
ile ortak motor
(With Renault Truck
Common Engine)
ENDUSTRIYEL
(Industrial)
1969 - 1977



Piston Ölçüleri
(Piston Dimensions)

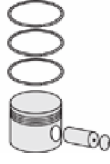
A : 59.800
B- : 19.500
BØ : 62.000
BX : 6.000
D : 112.800
E : 12.800

Pim : 32 x 82



Piston Özellikleri
(Piston Features)

Çelik Plaka
(Steel Strut)
Gözarası Düz
(Flat Eye Gap)



Piston Parça No
(Piston Part No)

87-279600-02
87-71635-STD



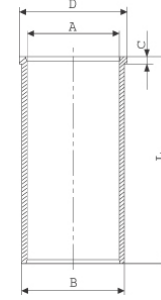
Segman Seti
(Ring Set)

06-279600-00-STD
3.000 CRP İKA
2.000 P STD
2.000 P STD
4.000 CRP STD

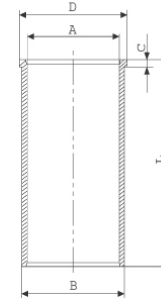


Silindir Gömleği
(Liner)

14-020170-01-DH
B : 108.000
L : 214.000
D : 111.800
C : 6.000

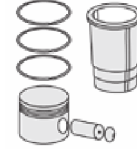


14-021630-00-D
B : 108.000
L : 214.000
D : 112.000
C : 6.000

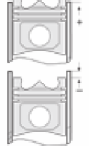


14-021632-00-D
B : 108.555
L : 214.000
D : 112.500
C : 6.000

Dış Çap 0,50mm Farklı
(Outside Diameter
0.50mm Different)



Silindir Kit
(Assembly Set)



Piston - Blok Montaj
Yüksekliği
(Piston - Block
Assembly Height)

- 0,28 / - 0,60

