



**Motor Özellikleri**  
(Engine Specifications)

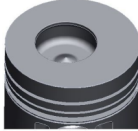
İmalatçı (Manufacturer):  
NISSAN  
Çap (Diameter): Ø 96  
FM Grup No: 6505

**BD 30**  
4 Sil. Dizel 2700cc  
100 PS LEVEND 3,0,  
TD 27  
1988...

**Piston Ölçüleri**  
(Piston Dimensions)

A : 53.100  
B- : 20.100  
BØ : 44.000  
BX : 4.600  
BY : 1.250  
D : 89.600  
E : 15.000

Pim : 30 x 80



**Piston Özellikleri**  
(Piston Features)

Çelik Plaka  
(Steel Strut)  
Soğutma Kanallı  
(Cooling Gallery)  
Yağ Püskürtme Oyuğu  
(Oil Jet Cut-Out)  
Gözarası Düz  
(Flat Eye Gap)



**Piston Parça No**  
(Piston Part No)

87-875300-02  
87-71650-STD



**Segman Seti**  
(Ring Set)

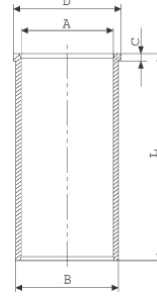
06-875300-00-STD

2.500 CRP KV1  
2.000 CRP KV1  
4.000 CRP STD



**Silindir Gömleği**  
(Liner)

14-021090-00-D  
B : 99.100  
L : 172.600  
D : 105.000  
C : 5.250



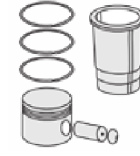
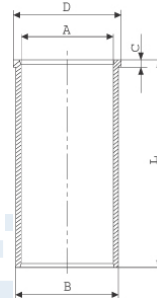
14-021091-00-D  
B : 99.350  
L : 172.600  
D : 105.250  
C : 5.500

Dıştan 0,25 mm Farklı  
(0.25 mm Different  
From The Outside)

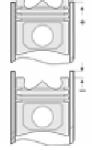
14-021092-10-D  
B : 99.600  
L : 172.600  
D : 105.500  
C : 6.000

Dıştan 0,50 mm Farklı  
(0.50 mm Different  
From The Outside)

14-029290-10-DH  
B : 99.000  
L : 172.600  
D : 104.950  
C : 5.100



**Silindir Kit**  
(Assembly Set)



**Piston - Blok Montaj**  
Yüksekliği  
(Piston - Block  
Assembly Height)

1,20mm Conta İle  
(With Gasket)  
+0 / +0,44

1,25mm Conta İle  
(With Gasket)  
+0,44 / +0,49

1,30 mm Conta İle  
(With Gasket)  
+0,49 / +0,54

