



OPEL - Ø 83,975

87-71686-STD



**Motor Özellikleri**  
(Engine Specifications)

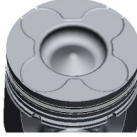
İmalatçı (Manufacturer):  
OPEL  
Çap (Diameter): Ø 83,975  
FM Grup No: 6616

**X2.0 DTH**  
4 Sil. Dizel 1998cc 74 Kw  
(100 PS) 19,5:1  
Turbocharged  
Intercooled 24 v  
OMEGA GLS, VECTRA CD,  
VECTRA CDX,  
VECTRA ENVOY, GL, GLS  
1997 - 2004

**Piston Ölçüleri**  
(Piston Dimensions)

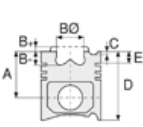
A : 45.800  
B- : 14.610  
BØ : 41.000  
C1 : 1.000  
D : 70.800  
E : 8.450

Pim: 29 x 68



**Piston Özellikleri**  
(Piston Features)

Segman Taşıyıcı  
(Ring Carrier)  
Yağ Püskürtme Oyuğu  
(Oil Jet Cut-out)  
Gözarası Konik  
(Conical Eye Gap)



**Piston Parça No**  
(Piston Part No)

87-102900-12  
87-71686-STD  
87-102907-12  
87-71686-050

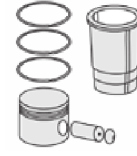


**Segman Seti**  
(Ring Set)

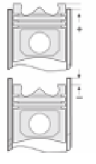
06-102900-00-STD  
06-102907-00 0,50 mm  
2.500 CKP KV1  
1.750 P IKA  
3.000 CRP STD



**Silindir Gömleği**  
(Liner)



**Silindir Kit**  
(Assembly Set)



**Piston - Blok Montaj**  
**Yüksekliği**  
(Piston - Block  
Assembly Height)

STD Conta ile  
(With STD Gasket)  
+0,40/+0,50  
1 Kertik Conta İle  
(With Notch Gasket)  
+0,51/+0,60  
2 Kertik Conta İle  
(With Notch Gasket)  
+0,61/+0,70

