



OPEL - Ø 82,5

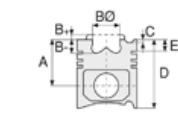
87-71690-STD



Motor Özellikleri
(Engine Specifications)

İmalatçı (Manufacturer):
OPEL
Çap (Diameter): Ø 82,5
FM Grup No: 6615

1.7 DR/YD
4 Sil. Dizel 1700cc
42 Kw (57 PS) / 44Kw
(60Ps) 23:1
ASTRA 1,7 D,
COMBO 1,7 D,
VECTRA 1,7 D
1988 - 1995



Piston Ölçüleri
(Piston Dimensions)

A : 44.950
B - : 0.350
D : 72.950
E : 13.500

Pim: 26 x 65



Piston Özellikleri
(Piston Features)

Segman Taşıyıcı
(Ring Carrier)
Çelik Plaka
(Steel Strut)
Sert Anotlama
(Hard Anodizing)
Gözarası Düz
(Flat Eye Gap)






Piston Parça No
(Piston Part No)

87-306700-02
87-71690-STD
87-306707-02
87-71690 050
87-306711-02
87-71690 100

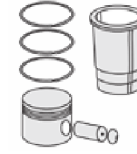


Segman Seti
(Ring Set)

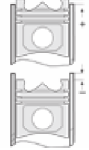
06-306700-00-STD
06-306707-00 0,50 mm
06-306711-00 1,00 mm
2.000  CRP KV1
2.000  P STD
3.000  CRP STD



Silindir Gömleği
(Liner)



Silindir Kit
(Assembly Set)



Piston - Blok Montaj
Yüksekliği
(Piston - Block
Assembly Height)

1.30 mm Conta İle
(With Gasket)
0 / + 0.75
1.40 Conta İle ,
(With Gasket)
+0.75/+0.85
1.50 Conta İle
(With Gasket)
+0.85/+1.05

