

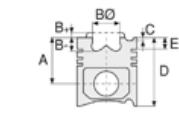


**Motor Özellikleri**  
(Engine Specifications)

İmalatçı (Manufacturer):  
PERKINS LKW  
Çap (Diameter): Ø 100  
FM Grup No: 6925

**1004-4T PHASER**

4 Sil. Dizel 3990cc  
82/88 Kw (112/120 PS)  
Turbocharge  
JCB İş Makinası (JCB  
Construction Machinery)  
1997....



**Piston Ölçüleri**  
(Piston Dimensions)

A : 70.160  
B- : 19.480  
BØ : 55.800  
BX : 3.200  
D : 108.060  
E : 9.860

Pim: 38,1 x 82,8



**Piston Özellikleri**  
(Piston Features)

Segman Taşıyıcı  
(Ring Carrier)  
Çelik Plaka  
(Steel Strut)  
Gözarası Konik  
(Conical Eye Gap)






**Piston Parça No**  
(Piston Part No)

87-884900-33  
87-71718-STD1A  
0,14 mm Kısa (Short)  
87-884900-32  
87-71718-STD A



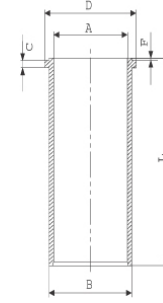
**Segman Seti**  
(Ring Set)

06-884900-90-STD  
3.500  CK KV1  
2.500  P F14  
4.000  CR STD



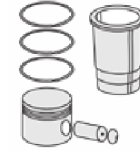
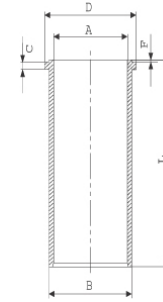
**Silindir Gömleği**  
(Liner)

14-040110-00-D  
B : 103.240  
L : 227.280  
D : 106.230  
C : 3.860  
F : 0.889

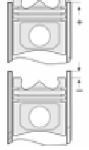


14-040200-00-DH

B : 103.190  
L : 227.280  
D : 106.450  
C : 3.860  
F : 0.889



**Silindir Kit**  
(Assembly Set)



**Piston - Blok Montaj**  
Yüksekliği  
(Piston - Block  
Assembly Height)

+0,25 /+0,40

