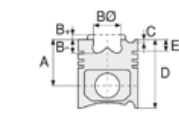




Motor Özellikleri
(Engine Specifications)

İmalatçı (Manufacturer):
PERKINS LKW
Çap (Diameter): Ø 100
FM Grup No: 6918

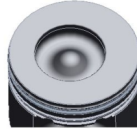
PHASER 200 Ti
6 Sil. Dizel 6000cc
148 Kw (201 PS)
Turbocharge
AS 26-200



Piston Ölçüleri
(Piston Dimensions)

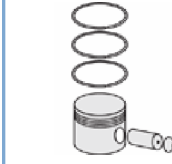
A : 70.391
B- : 20.750
BØ : 52.800
BX : 3.200
D : 108.230
E : 10.300

Pim: 39,7 x 78,2



Piston Özellikleri
(Piston Features)

Segman Taşıyıcı
(Ring Carrier)
Gözarası Konik
(Conical Eye Gap)



Piston Parça No
(Piston Part No)

87-325600-13
87-71750-STD1C
0.05 mm Kısa (Short)
87-325600-14
87-71750-STD2C
0.09 mm Kısa (Short)

87-325600-22
87-71750-STD3C
0.14 mm Kısa (Short)

87-325600-23
87-71750-STD4C
0.18 mm Kısa (Short)

87-325600-24
87-71750-STD5C
0.23 mm Kısa (Short)

87-325600-12
87-71750-STDC



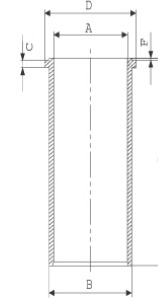
Segman Seti
(Ring Set)

06-325600-90-STD
3.500 CKP KV1
2.500 P GOE
4.000 CRP STD
Goetze® LKZ-Ring®



Silindir Gömleği
(Liner)

14-049300-00-D
B : 104.280
L : 227.560
D : 107.442
C : 3.860
F : 0.940



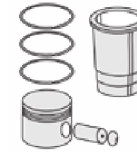
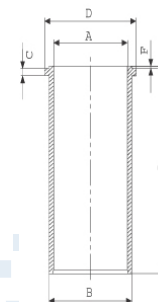
14-049301-10-D

B : 104.780
L : 227.560
D : 108.000
C : 4.250
F : 0.940

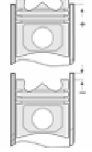
Dış Çap 0,50mm Farklı
(Outer Diameter
0,25 mm Different)

14-049310-00-DH

B : 104.200
L : 227.300
D : 107.440
C : 3.860
F : 1.000



Silindir Kit
(Assembly Set)



Piston - Blok Montaj
Yüksekliği
(Piston - Block
Assembly Height)

+ 0,382 / + 0,504

