



Motor Özellikleri
(Engine Specifications)

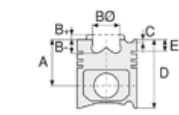
İmalatçı (Manufacturer):
PERKINS LKW
Çap (Diameter): Ø 100
FM Grup No: 6920

1004-4T PHASER 110
4 Sil. Dizel 3990cc 16:1
Turbocharge
T 4.40

1004-4TW PHASER
120 Ti
4 Sil. Dizel 3990cc 16:1
Turbocharged Intercooled
C 4.40

1006-6T PHASER
160 T
6 Sil. Dizel 5985cc 16:1
Turbocharge
1006-6T
1989....

1006-6TW PHASER
180 Ti
6 Sil. Dizel 5985cc 16:1
Turbocharged Intercooled
CC6.60



Piston Ölçüleri
(Piston Dimensions)

A : 70.000
B- : 20.140
BØ : 51.880
BX : 3.200
D : 108.000
E : 9.975

Pim: 38,1 x 82,8



Piston Özellikleri
(Piston Features)

Segman Taşıyıcı
(Ring Carrier)
Çelik Plaka
(Steel Strut)
Sert Anotlama
(Hard Anodizing)
Gözarası Konik
(Conical Eye Gap)



Piston Parça No
(Piston Part No)

87-325600-42
87-71757-STD A



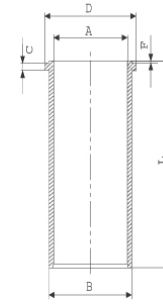
Segman Seti
(Ring Set)

06-325600-90-STD
3.500 CKP KV1
2.500 P GOE
4.000 CRP STD
Goetze® LKZ-Ring®



Silindir Gömleği
(Liner)

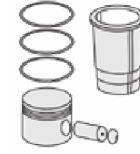
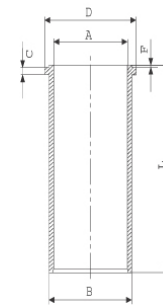
14-049300-00-D
B : 104.280
L : 227.560
D : 107.442
C : 3.860
F : 0.940



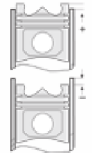
14-049301-10-D
B : 104.780
L : 227.560
D : 108.000
C : 4.250
F : 0.940

Dış Çap 0,50mm Farklı
(Outer Diameter
0,25 mm Different)

14-049310-00-DH
B : 104.200
L : 227.300
D : 107.440
C : 3.860
F : 1.000



Silindir Kit
(Assembly Set)



Piston - Blok Montaj
Yüksekliği
(Piston - Block
Assembly Height)

+0,14/+0,36

