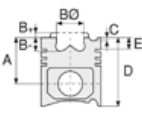




PEUGEOT - Ø 88

87-71761-STD



**Motor Özellikleri**  
(Engine Specifications)

**Piston Ölçüleri**  
(Piston Dimensions)

**Piston Parça No**  
(Piston Part No)

**Segman Seti**  
(Ring Set)

**Silindir Gömleği**  
(Liner)

**Silindir Kit**  
(Assembly Set)

**Piston - Blok Montaj**  
Yüksekliği  
(Piston - Block  
Assembly Height)

İmalatçı (Manufacturer):  
PEUGEOT  
Çap (Diameter): Ø 88  
FM Grup No: 7113

A : 38.250  
B : 0.650  
D : 71.850  
E : 8.250

87-316900-02  
87-71761-STD  
  
87-316907-02  
87-71761-050

06-316900-20-STD  
06-316907-20-0,50 mm  
  
1.500 CRP IKA  
2.000 P STD  
4.000 CRP STD

**Xn1**  
4 Sil. Benzinli 1971cc 57  
Kw (78PS) 504 Utilitaire 11,  
505GR,SR  
1971 - 1993

Pim : 23 x 74,1



**XN1P**  
4 Sil. Benzinli 1971cc 57  
Kw (78PS) A35,A39,B31,  
C30,C33,C36,C39,D3,  
B31,J9 A30,A31,A33  
1980 - 1987



**Piston Özellikleri**  
(Piston Features)

Gözarası Düz  
(Flat Eye Gap)

**XNA**  
4 Sil. Benzinli 1971cc 57  
Kw (78PS) 504 Utilitaire 11  
1970...

**XN1T**  
4 Sil. Benzinli 1971cc 57  
Kw (78PS) J5 1000K,  
1300K  
1981...

**XN2/3**  
4 Sil. Benzinli 1971cc 57  
Kw (78PS)  
Enjeksiyonlu (Injection)  
504  
1970 - 1984

