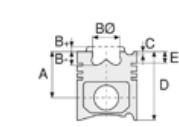




Motor Özellikleri
(Engine Specifications)

İmalatçı (Manufacturer):
PEUGEOT
Çap (Diameter): Ø 83
FM Grup No: 7107

XU5 / S / 2C / 1C / CP
4 Sil. Benzinli 1580cc 9, 5:1
Karbüratörlü
(With Carburetor)
205 Automatic, Open,
XR, XS, XT, 305GL, GLS,
GR, GT, GTX, 305SR
Automatic, Utilitaire, 405
GL/SR/GE/GR
1982 - 1990



Piston Ölçüleri
(Piston Dimensions)

A : 37.500
B - : 2.100
D : 67.500
E : 8.500

Pim : 22 x 66



Piston Özellikleri
(Piston Features)

Biyel Koluna Sıkı Geçme
(Close-Fit to Connecting Rod)
Gözarası Düz
(Flat Eye Gap)



Piston Parça No
(Piston Part No)

87-151200-02
87-71771-STD



Segman Seti
(Ring Set)

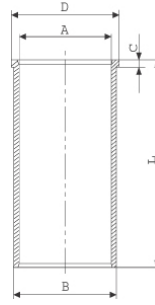
06-151200-50-STD

1.750 CR IKA
1.750 P STD
4.000 CR ST

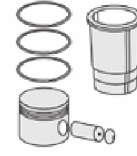


Silindir Gömleği
(Liner)

14-634910-00-WH
B : 88.000
L : 141.000
D : 97.000
C : 6.500
F : 0.400

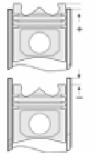


O-RİNG BİLGİ
(O-ring Information)
50-350491-00
1X85,80*1,25 NBR



Silindir Kit
(Assembly Set)

89-151200-02-STD
89-71771-STD



Piston - Blok Montaj
Yüksekliği
(Piston - Block
Assembly Height)

