



PEUGEOT-CITROEN - Ø 85

87-71796-STD



Motor Özellikleri
(Engine Specifications)

İmalatçı (Manufacturer):
PEUGEOT-CITROEN
Çap (Diameter): Ø 85
FM Grup No: 1904

TD10ATED

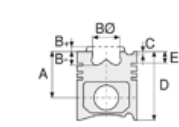
4 Sil. Dizel 1998cc 81
Kw (110 Ps) 18:01 Turbo
C5 HDI, JUMPY HDI,
XSARA 2.OHDI
2001...

TD10TD Euro 3

4 Sil. Dizel 1998cc 66
Kw (90Ps) Turbo /
Peugeot ve Fiat ile
ortak motor
(With Peugeot And Fiat
Common Engine)
BERLINGO 2.OHDI,
C5 2.OHDI,
JUMPER 2.OHDI,
XANTIA 2.OHDI,
XSARA 2.OHDI
1998...

G6DB

4 Sil. Dizel 1997cc 100
KW -136 PS C-Max,
FOCUS II 2010...



Piston Ölçüleri
(Piston Dimensions)

A : 46.750
B- : 18.300
BØ : 38.000
BX : 2.500
BY : 1.000
C1 : 1.000
D : 80.750
E : 8.400

Pim : 28 x 70



Piston Özellikleri
(Piston Features)

Segman Taşıyıcı
(Ring Carrier)
Yağ Püskürtme Oyuğu
(Oil Jet Cut-Out)
Gözarası Konik
(Conical Eye Gap)



Piston Parça No
(Piston Part No)

87-114700-02
87-71796-STD
87-114708-02
87-71796-060

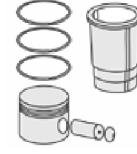


Segman Seti
(Ring Set)

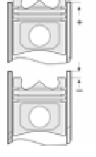
06-114700-00-STD
06-114708-00-0,60 mm
3.500 CKP KV1
2.000 P STD
3.000 CRP STD



Silindir Gömleği
(Liner)



Silindir Kit
(Assembly Set)



Piston - Blok Montaj
Yüksekliği
(Piston - Block
Assembly Height)

1,25 mm Conta ile
(With Gasket)
+0,55 / +0,60
1,30 mm Conta ile
(With Gasket)
+0,61 / +0,65
1,35 mm Conta ile
(With Gasket)
+0,66 / +0,70
1,40 mm Conta ile
(With Gasket)
+0,71 / +0,75

