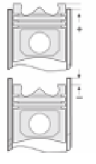
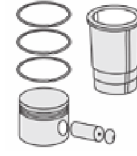
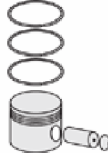
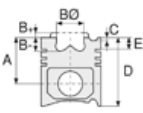




PEUGEOT - Ø 85

87-71798-STD



Motor Özellikleri
(Engine Specifications)

İmalatçı (Manufacturer):
PEUGEOT
Çap (Diameter): Ø 85
FM Grup No: 7148

DW12 TD/TED
4 Sil. Dizel 2178cc
Common Rail
607 HDI, 406 HDI,
BOXER 330M / 330C /
290C 2,2 HD
2002...

Piston Ölçüleri
(Piston Dimensions)

A : 48.700
B- : 17.700
BØ : 42.000
BX : 2.000
BY : 0.500
C1 : 1.200
D : 77.700
E : 9.500

Pim : 30 x 68



Piston Özellikleri
(Piston Features)

Segman Taşıyıcı
(Ring Carrier)
Yağ Püskürtme Oyuğu
(Oil Jet Cut-Out)
Gözarası Konik
(Conical Eye Gap)




Piston Parça No
(Piston Part No)

87-114700-22
87-71798-STD

87-114708-22
87-71798-060

Segman Seti
(Ring Set)

06-114700-00-STD
06-114708-00-0,60 mm

3.500  CKP KV1
2.000  P STD
3.000  CRP STD

Silindir Gömleği
(Liner)

Silindir Kit
(Assembly Set)

Piston - Blok Montaj
Yüksekliği
(Piston - Block
Assembly Height)

