



Motor Özellikleri
(Engine Specifications)

İmalatçı (Manufacturer):
RENAULT
Çap (Diameter): Ø 76
FM Grup No: 7265

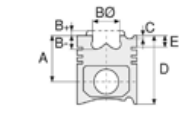
K9K 732 Euro4
4 Sil. Dizel 1461cc 78
Kw(106 Ps) Turbo,
Intercooler Megane II
1.5 dCi, Scenic 1.5 dCi
2005...

K9K 764 Euro4
4 Sil. Dizel 1461cc 78
Kw (106 Ps) Turbo,
Intercooler Clío Grandtour
1.5 dCi, Clío III 1.5 dCi,
Modus 1.5 dCi
2005...

K9K 780 Euro4
4 Sil. Dizel 1461cc 76
Kw(103 Ps) Turbo,
Intercooler Laguna III
1.5 dCi
2007...

K9K 804 Euro4
4 Sil. Dizel 1461cc 78
Kw (106 Ps) Turbo,
Intercooler Kangoo 1.5 dCi
2008...

K9K 806 Euro4
4 Sil. Dizel 1461cc 76
Kw (103 Ps) Turbo,
Intercooler Kangoo Be Bop
1.5 dCi, Kangoo Express
1.5 dCi
2008...



Piston Ölçüleri
(Piston Dimensions)

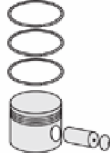
A : 41.700
B - : 12.800
BØ : 49.000
BX : 0.930
BY : 0.830
C1 : 0.250
C2 : 0.430
D : 66.000
E : 9.000

Pim : 26 x 60



Piston Özellikleri
(Piston Features)

Segman Taşıyıcı
(Ring Carrier)
Soğutma Kanallı
(Cooling Gallery)
Yağ Püskürtme Oyuğu
(Oil Jet Cut-Out)
Gözarası Konik
(Conical Eye Gap)



Piston Parça No
(Piston Part No)

87-123407-73
87-71832-0501A
0,20 mm Kısa (Short)

87-123400-73
87-71832-STD1A
0,20 mm Kısa (Short)

87-123400-72
87-71832-STDA

87-123407-72
87-71832-050

87-123410-72
87-71832-1.00



Segman Seti
(Ring Set)

06-123400-10-STD
06-123407-10-0,50 mm
06-123411-10-1,00 mm

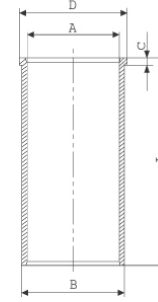
2.000 CKP KV1
2.000 P GOE
2.500 CRP GOE

Goetze® LKZ-Ring®
Yağ Segmanı Matkap Delik
(Oil Ring Drill Hole)



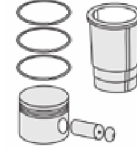
Silindir Gömleği
(Liner)

14-020650-00-D
B : 79.100
L : 142.000
D : 81.000
C : 5.000

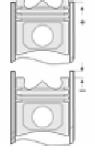


14-020651-00-D
B : 79.600
L : 142.000
D : 81.500
C : 5.500

Dıştan çap 0,50
mm Farklı
(Outer diameter
0.50mm Different)



Silindir Kit
(Assembly Set)



Piston - Blok Montaj
Yüksekliği
(Piston - Block
Assembly Height)

+0,25 / +0,30

