



RENAULT - Ø 76

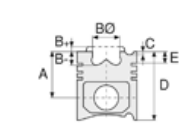
87-71846-STD



Motor Özellikleri
(Engine Specifications)

İmalatçı (Manufacturer):
RENAULT
Çap (Diameter): Ø 76
FM Grup No: 7210

C 1/2/3 /16 J
4 Sil. Benzinli 1397cc 43/53
Kw (59/72 PS) 9, 25:1
Volvo ile ortak motor
(With Volvo Common
Engine)
R 12 TSW TOROS,
R 12 TX TOROS,
R 9 BVA AUTOMATİC,
R 9 GTE BROADWAY,
R 9 SPRING
1981 - 1998



Piston Ölçüleri
(Piston Dimensions)

A : 37.500
D : 64.000
E : 7.750

Pim : 20 x 64



Piston Özellikleri
(Piston Features)

Biyel Koluna Sıkı Geçme
(Close-Fit to Connecting Rod)
Gözarası Düz
(Flat Eye Gap)



Piston Parça No
(Piston Part No)

87-333500-02
87-71846-STD



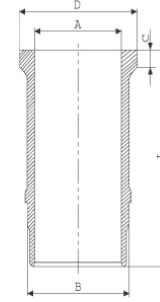
Segman Seti
(Ring Set)

06-333500-30-STD
1.750 CRP IKA
2.000 P STD
4.000 CRP STD

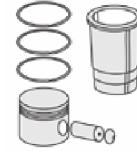


Silindir Gömleği
(Liner)

14-630820-00-WH
B : 80.600
L : 134.000
D : 90.200
C : 95.000

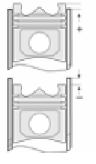


O-RING BİLGİ
(O-ring Information)
50-324418-00
1x 77,2*1,25 MVQ



Silindir Kit
(Assembly Set)

89-333500-02-STD
89-71846-STD



Piston - Blok Montaj
Yüksekliği
(Piston - Block
Assembly Height)

