



Motor Özellikleri
(Engine Specifications)

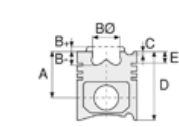
İmalatçı (Manufacturer):
Saab-Scania
Çap (Diameter): 127
FM Grup No: 7507

D11

6 Sil. Dizel 11000cc
149/153 Kw (203/208 PS)
15:1
Tepe segmanı düz
Motor No:880840-->
L110, L111, LB110, LB111,
LBS111, LS111, SBA111, T112E
1975 - 1981

D11.01

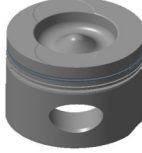
6 Sil. Dizel 11018cc
149/153 Kw (203/208 PS)
16:1
Tepe segmanı düz
Motor No:880840-->
L110, L111, LB110, LB111,
LBS111, LS111, SBA111, T112E
1975 - 1981



Piston Ölçüleri
(Piston Dimensions)

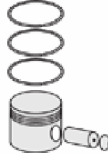
A : 98.760
B - : 27.060
BØ : 76.000
C1 : 0.500
D : 156.260
E : 23.600

Pim: 50 x 107,8



Piston Özellikleri
(Piston Features)

Segman Taşıyıcı
(Ring Carrier)
Yağ Püskürtme Oyuğu
(Oil Jet Cut-out)
Gözarası Konik
(Conical Eye Gap)



Piston Parça No
(Piston Part No)

87-990500-52
87-71903-STD A



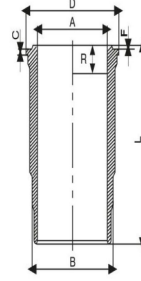
Segman Seti
(Ring Set)

06-990500-80-STD
2.385 CK KV1
2.385 STD
4.747 CR STD
Goetze® LKZ-Ring®

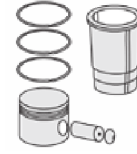


Silindir Gömleği
(Liner)

14-450850-00-WH
B : 140.000
L : 291.000
D : 153.800
C : 8.200
F : 0.800
R : 21.000

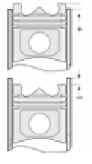


O-RING BİLGİ (O-Ring
Information)
24-35025-43/0
3x 139,5*4 FPM



Silindir Kit
(Assembly Set)

89-990500-52-STD
89-71903-STD A



Piston - Blok Montaj
Yüksekliği
(Piston - Block
Assembly Height)

-0,14/+0,15

